

# Willmar Lakes Area

OFFICIAL  
GUIDE TO  
KANDIYOHI  
COUNTY



*Where the Lakes Begin*  
**AND THE FUN NEVER ENDS**

WEST CENTRAL MINNESOTA





Locally Owned,  
Supporting Our Community!

- Gasoline: 87-89-91 Octane
- E85 - E15
- Diesel
- Vacuums
- 10 Minute Oil Change
- Detail Services
- Conveyorized Car Wash
- Self Service Bays

(320) 235-5740  
www.waltscarwash.com  
Corner of Willmar Avenue & First Street

## YOUR LOCAL NEWS & INFORMATION SOURCE

Stay informed & entertained  
at home or on the lake.

**Tribune** WEST CENTRAL

Subscribe today!  
[wctrib.com/subscribe](http://wctrib.com/subscribe)



# KENSINGTON FINANCIAL CENTER

2800 SOUTH FIRST STREET  
WILLMAR MN  
320-235-7000



320-235-7000 | 877-254-3191



**Transcend**  
Rehab & Wellness  
320-318-8812

[www.transcend.rehab](http://www.transcend.rehab)



**DOUG FENSTRA**  
Realtor, Broker, ALC  
FenstraRealEstate.com  
320-212-1448



**HEARTLAND**  
ORTHOPEDIC SPECIALISTS

320-241-7355

[www.HeartlandOrthopedics.com](http://www.HeartlandOrthopedics.com)

**DUNN  
BROTHERS**  
COFFEE™

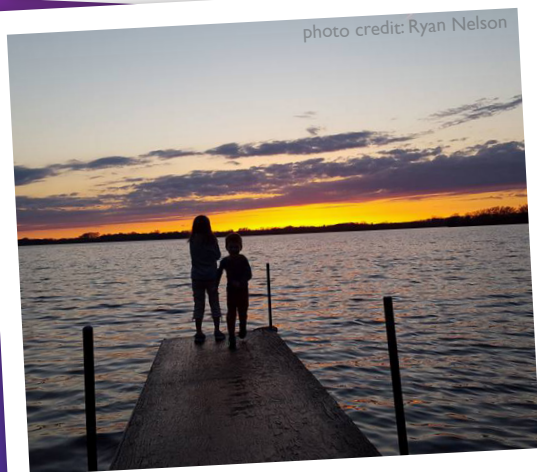
320-235-8495

[www.dunnbros.com](http://www.dunnbros.com)





Games Lake



Green Lake

# Welcome to The Willmar Lakes Area

This picturesque region in west central Minnesota is splashed with colorful scenery, crystal clear lakes, patchwork-quilted farmlands and rolling wooded hills. All four seasons showcase something special for visitors of all ages.

Recreational activities are plentiful with our many lakes and parks. Visitors to the area enjoy boating, fishing, canoeing, skiing, golfing, hiking, swimming, camping, snowmobiling and much more.

Each trip to this area can provide a rewarding historic journey by visiting museums, fine arts or historic sites.

If it's shopping opportunities that pique your interest, you can choose from specialty, antique or cultural shops. Restaurants of all types can also be found throughout the county.

This guide will assist you in learning about the Willmar Lakes Area and give you more reasons than ever to make your visit both pleasurable and memorable.

We hope you enjoy your visit and please share your photos and experiences with us by using #willmarlakesarea.

## Table of Contents

<b>Lakes</b>	<b>15-21</b>
<b>Outdoor Recreation</b>	<b>4-7, 22-25</b>
<b>Things To Do</b>	<b>9-13</b>
<b>Places To Stay</b>	<b>28-31</b>
<b>Events</b>	<b>32-33</b>
<b>Eat &amp; Drink</b>	<b>34-35</b>
<b>Parks</b>	<b>26-27</b>
<b>Maps</b>	<b>40-43</b>
<b>Community</b>	<b>38-39</b>

*The information contained in this guide has been published in good faith on the basis of information supplied to the publishers and designers. While every effort has been made to ensure the accuracy of all information contained in this guide at the time of publishing, the publishers and designers cannot guarantee its accuracy and accepts no responsibility for any error or misrepresentation.*

© 2021 Willmar Lakes Area Convention & Visitors Bureau.



The Willmar Lakes Area Guide is brought to you by:  
Willmar Lakes Area Convention & Visitors Bureau  
320-235-3552 | [www.willmarlakesarea.com](http://www.willmarlakesarea.com)

This guide was published by: Lakeside Press, Inc.  
320-235-5849 | [www.lakesidecreates.com](http://www.lakesidecreates.com)

*A special thank you to John Kellen for his editorial contributions.*



# Spring

Spring...that time of year when color explodes and sunshine warms the Willmar Lakes Area. Kandiyohi County is situated in the heart of what the Dakota called "Mni Sota Makoce" or the "Land where the waters are so clear they reflect the clouds."

The region is blessed with an abundance of natural resources - lakes, rivers, forest, prairie as well as a diverse, hospitable population welcoming visitors far and wide to come and experience all we have to offer.

An easy 92-mile drive from Minneapolis makes the lakes area a perfect vacation destination. Enjoy kayaking, canoeing or make it out for fishing opener. There are literally hundreds of lakes to choose from.

Biking, hiking and horseback riding are other great ways to enjoy our pristine natural environment. From flat, gentle and wheelchair accessible trails to challenging and steep, there is something for everyone.

Spring is also the perfect time to visit our many parks and observe a wide variety of birds migrating north. Grab your camera or binoculars and explore the woods, shorelines and grasslands - you'll be glad you did!



photo credit: Donn Winckler



photo credit: Dennis Benson

photo credit: Candace Hensley



photo credit: Sydney Fischer





# Summer

As the daylight lengthens and schools get out there is so much to see and do, much of it centered around water. Families flock to the lakes to swim, play on the beach and visit our resorts. Watercraft of all varieties ply the waters from paddle boards to pontoons, fishing boats to ski boats and jet skis. Or if you'd rather relax, you can float lazily on an inner tube or inflatable lounge chair with your favorite beverage.

Camping is another favorite pastime here in the Lakes Region. Sibley State Park and many of the county parks offer a variety of amenities for campers with tents, RV's and horse trailers. Many fond memories will be made out on the hiking trails, lakes and in front of bonfires.

For the active type, there are plenty of options - play a round of golf on one of the many courses in the area or play tennis on numerous courts. There are also frisbee golf courses to test your skills.

While in the area you'll want to check out the many shops, restaurants, art galleries and farmer's markets. Sample the great cuisine and take home a souvenir to remind you to visit us again in the coming years.

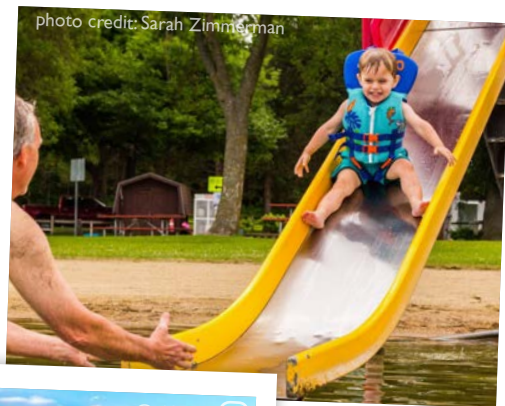




photo credit: Beth Fischer

# Fall

The change of seasons signals a myriad of color - the leaves are especially beautiful along the many bike trails. The Prairie Pothole region left over from the last glacial age is a sportsman's paradise. Migrating waterfowl of all types frequent our wetlands and draw hunters from the four corners of Minnesota and from surrounding states.

Deer and pheasant hunting are also popular as our wooded hills, sloughs and public grasslands have an abundance of wild game. If you prefer, bring your camera and capture images instead.

Cooler temperatures and crisp autumn days offer some of the best times of the year. The adventurous campers and fishermen are often rewarded with tranquil experiences and the peace that comes with a solitary walk in the woods or hooking into a lunker on a deserted lake.

One thing is for sure - as some long for the dog days of summer, others cannot wait for the advent of winter sports.



photo credit: Amy Freidrichs



@kristadowdey

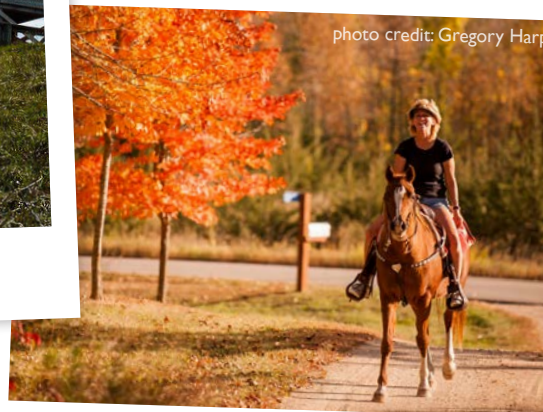


photo credit: Gregory Harp



# Winter

For some, the darkest season conjures up thoughts of hibernation or sitting around a crackling fire sipping a latte or hot chocolate. For many others, winter presents countless options to get out and enjoy the snow and ice. The arrival of freezing temperatures draws thousands out to enjoy a local pastime of ice fishing. From the most basic set up to the elaborate ice castles, fishermen and women make the most of winter all season long.

Traditional activities such as ice skating, hockey and sledding attract young and old while kick-sledding and fat tire biking have become popular in recent years. Even as the mercury drops, folks enjoy everything the outdoors has to offer! With hundreds of miles of groomed trails, cross country skiing, snow shoeing and snowmobiling are perennial favorites in the lakes area. Whether in search of peace and quiet or the thrill of racing over the snow at high speed there is something for everyone.



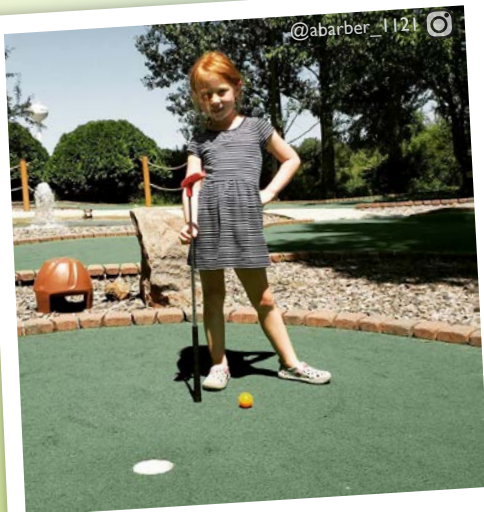
@mnadventureseeker



# Share Your Photos



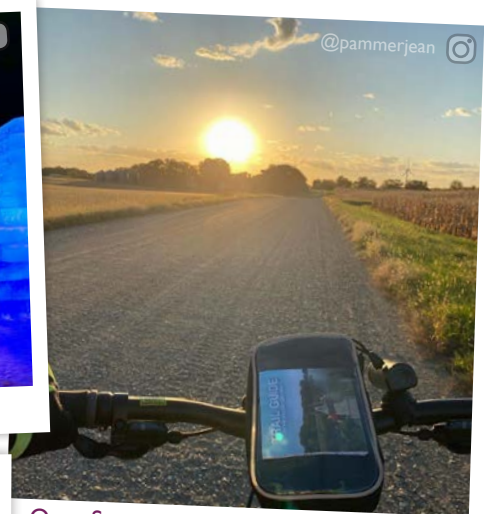
#WillmarLakesArea



Big Kahuna Fun Park



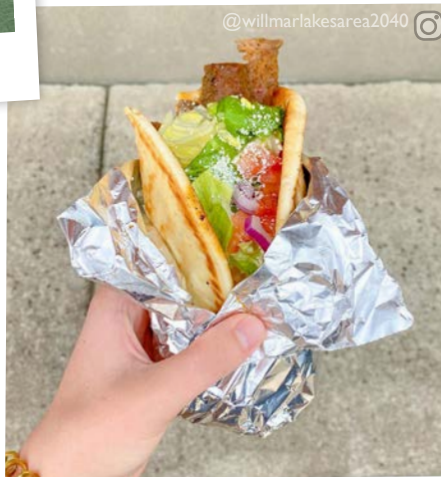
Spicer Winterfest Ice Castle



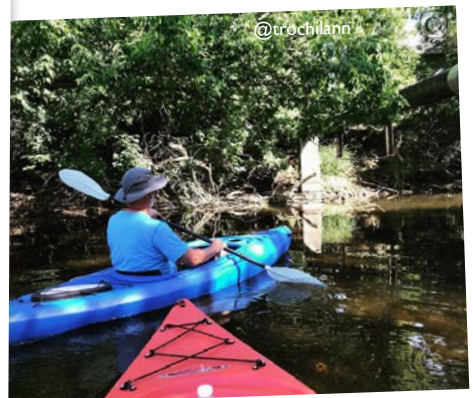
Open Spaces on a Country Road



Sunrise on Green Lake



Spurs Bar & Grill



Middle Fork Crow River



Goat Ridge Brewing Co.



Foot Lake



Games Lake County Park



# Things To Do

## AREA ARTS & ENTERTAINMENT

**greenwater garage + gallery**  
101 Main St. S | New London  
[www.greenwatergarage.com](http://www.greenwatergarage.com)

**New London-Spicer Performing Arts Center**  
101 4th Ave. SW | New London  
(320) 354-2252

**Potato Eaters Gallery**  
330 Litchfield Ave. SW | Willmar  
(320) 382-9951

**Prairie Winds Concert Band**  
[www.prairiewindsconcertband.com](http://www.prairiewindsconcertband.com)

**Ridgewater College Willmar Campus Theatre**  
2101 15th Ave. NW | Willmar  
(320) 222-7605  
[www.ridgewater.edu](http://www.ridgewater.edu)

**The Barn Theatre**  
321 4th St. SW | Willmar  
(320) 235-9500  
[www.thebarntheatre.com](http://www.thebarntheatre.com)

**The Little Theatre**  
24 Central Ave. E | New London  
(320) 557-5584  
[www.newlondonlittletheatre.org](http://www.newlondonlittletheatre.org)

**West Central Connection Chorus**  
(320) 894-0433  
[www.westcentralconnection.com](http://www.westcentralconnection.com)

**West Central Singers**  
(320) 235-1441 ext. 17  
[www.westcentralsingers.com](http://www.westcentralsingers.com)

**Willmar Area Arts Council**  
321 4th St. SW | Willmar  
(320) 235-8560  
[www.willmarareaartscouncil.org](http://www.willmarareaartscouncil.org)

**Willmar Area Symphonic Orchestra**  
(320) 214-9433  
[www.willmarorchestra.com](http://www.willmarorchestra.com)

**Willmar Education and Arts Center** (art exhibition gallery and performance auditorium)  
611 5th St. SW | Willmar  
[www.willmarareaartscouncil.org](http://www.willmarareaartscouncil.org)

## BIBLE CAMPS

**Green Lake Bible Camp and Chapel**  
9916 Lake Ave. S | Spicer  
(320) 796-2181  
[www.gllm.org](http://www.gllm.org)

**Shores of St. Andrew Bible Camp and Marble Church**  
19080 16th St. NE | New London  
(320) 354-2961 | [www.gllm.org](http://www.gllm.org)

## BIRDWATCHING

**Monson Lake State Park**  
1690 15th St. NE | Sunburg  
(320) 366-3797 or Contact Sibley State Park (320) 354-2055

**Prairie Woods Environmental Learning Center**  
12718 10th St. NE | Spicer  
(320) 354-5894  
[www.prairiewoodselc.org](http://www.prairiewoodselc.org)

**Sibley State Park**  
800 Sibley Park Road NE  
New London | (320) 354-2055  
[www.dnr.state.mn.us/state\\_parks/sibley](http://www.dnr.state.mn.us/state_parks/sibley)

## BIKING

**BikeWillmar Bike Share**  
Rent a bike at one of 11 docking stations located throughout Willmar. Download the Koloni App to find bike availability and to rent a bike.  
(320) 235-1454  
[www.willmar.gov/bike\\_share](http://www.willmar.gov/bike_share)

**Glacial Lakes State Trail** (wheelchair accessible)  
Paved 22 miles between Willmar, Spicer, New London, Hawick and the Kandiyohi/Stearns County line and a five mile stretch from Richmond to Roscoe is also paved.

**Prairie Woods Environmental Learning Center Mountain Bike Trail**  
12718 10th St. NE | Spicer  
(320) 354-5894  
[www.prairiewoodselc.org/trails](http://www.prairiewoodselc.org/trails)

## FAMILY FUN

**Alley on Ash** (Bowling Center)  
19 Ash St. SE | New London  
(320) 354-2112

**Big Kahuna Fun Park**  
190 Progress Way | Spicer  
(320) 796-2445  
[www.spicerfunpark.com](http://www.spicerfunpark.com)

**Destination Playground**  
945 US-71 BUS. | Willmar  
[www.willmarmn.gov](http://www.willmarmn.gov)

**Dorothy Olson Aquatic Center**  
1601 22nd St. SW | Willmar  
(320) 441-2018 | [www.willmarmn.gov](http://www.willmarmn.gov)

**Little Crow Water Ski Team**  
Neer Park, 311 2nd Ave. SE  
New London | [www.littlecrow.com](http://www.littlecrow.com)

**Rice Park Splash Pad**  
805 3rd St. SW | Willmar  
[www.willmarmn.gov](http://www.willmarmn.gov)

**Sibley State Park Interpretive Center**  
800 Sibley Park Road NE | Spicer  
(320) 354-2055  
[www.dnr.state.mn.us/state\\_parks/sibley](http://www.dnr.state.mn.us/state_parks/sibley)

**West Central Rockhounds**  
1605 1st St. S., Suite D10 | Willmar  
(320) 262-3451  
[www.wcrockhounds.com](http://www.wcrockhounds.com)

**Wildcat Cove**  
159 Lake Ave. N | Spicer  
[www.explorespicer.com](http://www.explorespicer.com)

## Family Fun



*Willmar Stingers* | Willmar



*Dorothy Olson Aquatic Center* | Willmar



*Little Crow Ski Team* | New London



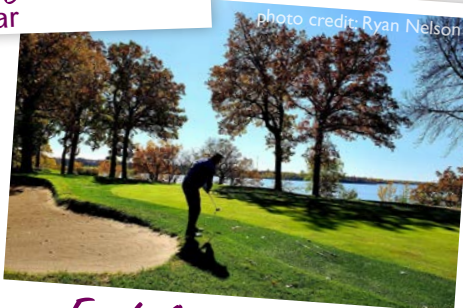
*Big Kahuna Fun Park* | Spicer



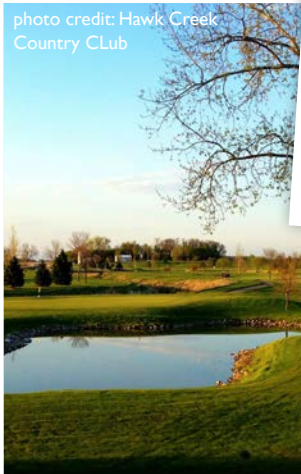
# Make A Hole In One



*Valley Golf Course*  
Willmar



*Eagle Creek Golf Club*  
Willmar



*Hawk Creek Country Club*  
Raymond



*Little Crow Golf Resort*  
Spicer



*Island Pine Golf Club*  
Atwater

## FARMER'S MARKETS & FARMS

### Becker Market

414 Becker Ave. SE | Willmar  
(320) 894-7901

### Brouwer Berries

12951 105th St. SW | Raymond  
(320) 967-4718  
www.brouwerberries.com

### Dykstra Gardens

21201 37th St. SW | Blomkest  
(320) 978-8622

### New London Farmer's Market

37 1st Ave. SW | New London  
June-Mid October | Saturdays  
8:00am-12:00pm | Holm Park

### Rustic Designs Flower Farm

25801 County Road 9 NE | Belgrade  
(320) 333-2275  
www.rusticdesignsflowerfarm.com

### Simply Shrimp LLC

14580 Hwy. 71 S | Blomkest  
(320) 979-1440

### Uptown Willmar Farmer's Market

1605 1st St. S | Willmar  
June-October | Wednesdays  
12:00pm - 6:00pm | (320) 212-6659  
June-October | Saturdays  
8:00am-12:00pm | (320) 235-1294

### YMCA Farmer's Market

1000 Lakeland Drive SE  
Willmar | (320) 894-6789  
July-October | Saturdays  
6:30am-12:00pm

## FITNESS

### Anytime Fitness

1605 1st St. S | Willmar  
(320) 441-2300  
www.anytimefitness.com

### Bar Path Crossfit

3950 N Hwy. 71 | Willmar  
(320) 282-6329  
www.barpathcrossfit.com

### Crossfit Attila

1303 1st St. S | Willmar  
(320) 214-0044  
www.crossfitattila.com

### Kandiyohi County Area Family YMCA

1000 Lakeland Drive SE | Willmar  
(320) 222-9622  
www.kandiyomca.org

### Snap Fitness

300 MN-23 S | Spicer  
(320) 796-2424  
www.snapfitness.com

### Snap Fitness

812 1st St. S | Willmar  
(320) 222-7627  
www.snapfitness.com

### Willmar Civic Center & Blue Line Club

2707 Arena Drive | Willmar  
(320) 235-1454  
www.willmarmn.gov

### Xpress Fitness Lodge, LLC

900 Litchfield Ave. SE | Willmar  
(320) 894-1555  
www.xpressfitnesslodge.com

## GOLFING, MINI GOLF, DISC GOLF

### Eagle Creek Golf Club

1000 26th Ave. NE | Willmar  
(320) 235-1166  
www.willmargolf.com

### Hawk Creek Country Club

100 Spicer Ave. NE | Raymond  
(320) 967-4653  
www.hawkcreekcc.com

### Island Pine Golf Club

1601 Wyoming Ave. W | Atwater  
(320) 974-8600  
www.islandpinegolf.com

### Little Crow Golf Resort

15980 Hwy. 23 NE | Spicer  
(320) 354-2296  
www.littlecrowresort.com

### Valley Golf Course

1900 Becker Ave. SE | Willmar  
(320) 235-6790  
www.valleygolfwillmar.com

### Big Kahuna Fun Park Mini-Golf

190 Progress Way | Spicer  
(320) 796-2445  
www.spicerfunpark.com

### Ridgewater Disc Golf Course

2101 15th Ave. NW | Willmar  
9-hole Course

### Robbins Island Disc Golf Course

945 US - 71 BUS | Willmar  
(320) 235-4913 | 18-hole Course

### Tadd Lake Disc Golf Course

Centennial Park, 6th and  
Washington | Atwater  
(320) 974-8760 | 18-hole Course

## MALLS

### Green Lake Mall

301 Hwy. 23 | Spicer  
(320) 403-2466  
www.greenlakemall.com

### Skylark Center

1604 1st St. S | Willmar

### Uptown Willmar

1605 1st St. S | Willmar  
(320) 235-6717  
www.uptownwillmar.com

## MOVIE THEATRES

### Golden Ticket Cinemas Kandi 6

1605 1st St. S, (Uptown Willmar)  
Willmar | (320) 262-5505  
www.gtcinemas.com

### Spicer Cinema 4

151 Progress Circle | Spicer  
(320) 796-5500  
www.spicercinema.com



## MUSEUMS

### Atwater Area Historical Society and Museum

500 Pleasant Ave. W | Atwater  
(320) 974-1074  
Open by appointment

### Kandiyohi County Historical Society and Museum

610 Hwy. 71 NE | Willmar  
(320) 235-1881  
www.kandiyohicountyhistory.com

### Locomotive 2523

On display at the Kandiyohi County Historical Society | 610 Hwy. 71 NE Willmar | (320) 235-1881

### Memorial Room in the Willmar City Auditorium

313 6th St. SW | Willmar  
(320) 235-1454 | www.willmarmn.gov

### Norway Lake Log Church

(located at 9601 195th Ave. NW between Pennock and Sunburg)  
(320) 366-3819 | www.nllha.org

### Raptor Ridge Museum

12050 County Road 40 NE | Spicer  
(320) 354-8820

### Schwanke's Museum

3310 South 1st St. | Willmar  
(320) 235-4341  
www.schwanketractor.com/museum

### Sperry House

610 Hwy. 71 NE | Willmar  
(320) 235-1881  
www.kandiyohicountyhistory.com

### The Village Children's Museum

1312 SE Lakeland Drive | Willmar  
(320) 262-3057  
www.willmarvillage.com

## RECREATIONAL RENTALS (ALL SEASONS)

### Blake's Recreational Rental

Jet Skis, Pontoons, Kneeboards, Wakeboards, Kayaks and Tubes  
101 Pleasant Ave. W | Atwater  
(320) 974-3501

### Green Lake Cruises

Houseboat Cruises and Pontoon Rental  
159 Lake Ave. S | Spicer  
(320) 894-5774  
www.greenlakecruises.com

### Green Lake Enterprises LLC

Fish Houses & Pontoons  
334 Lake Ave. N | Spicer  
(320) 796-5786

### Green Lake Rentals

Fish Houses, Spearing Houses, Pontoons, Paradise Pads, Kayaks and Soft Top Paddle Boards  
12381 North Shore Drive | Spicer  
(320) 220-4507

### Prairie Woods Environmental Learning Center

12718 10th St. NE | Spicer  
(320) 354-5894  
www.prairiewoodselc.org

### Simple Days On The Lake

Kayak Rentals | (320) 220-2253

### The Wild Oar

Peddles, Paddles, Boards & More  
Robbins Island on Foot Lake  
(320) 220-1002

## SPAS AND WELLNESS SERVICES

### Bellezza Salon & Spa

101 Lake Ave. N | Spicer  
(320) 796-0767  
www.bellezzasalonspa.com

### InSpa Studio - Carol Fader

101 Lake Ave. N | Spicer  
(320) 220-0551  
www.facebook.com/inspastudiospicer

### Legacy Salon

602 1st St. S, Ste D | Willmar  
(320) 441-2800  
www.legacysalonmn.com

### Mill Pond Salon

50 Main St. S | New London  
(320) 335-0077  
www.millpondsalon.com

### Rejuvenate Salon & Spa

61 Main St. S, Suite 1 | New London  
(320) 347-1091  
www.rejuvenatespaday.com

### ReNu Beauty & Wellness

61 Main St. S, Suite 6 | New London  
(651) 276-2284  
www.renumindbody.com

### Salon J Spa & Boutique

180 Progress Way | Spicer  
(320) 796-6843

### Simply Beautiful Wellness Center

9 Main St. N | New London  
(320) 354-0333  
www.simplybeautifulnl.com

### The Abohe Salon & Spa

21855 52nd St. NE  
New London  
(320) 354-4930  
www.theabodesalon.com

# Rainy Day Activities



photo credit: Dennis Benson

*Prairie Woods Environmental Learning Center Climbing Wall | Spicer*



photo credit: Megan Beaver

*West Central Rockhounds Willmar*

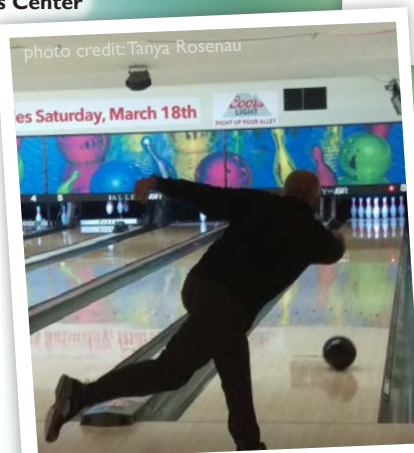


photo credit: Tanya Rosenau

es Saturday, March 18th

*Alley On Ash | New London*



photo credit: The Village Children's Museum

*The Village Children's Museum Willmar*

## LITTLE THEATRE

Locally Owned Independent Art Space

LIVE MUSIC • PERFORMANCE • INDIE FILM

Coming Soon! THE Auditorium Bar & Barista (for select events)

New London, MN  
24 Central Ave E • PO Box 536  
www.newlondonlittletheatre.org

## The Barn Theatre

320.235.9500  
www.thebarntheatre.com

Providing quality performing arts for our community!  
Please join us to enjoy the show!  
@thebarntheatre

facebook instagram



## SPECIALTY SHOPS & BOUTIQUES

### Ali J Boutique

20 Central Ave. SE | New London  
(320) 212-3917  
www.alijboutique.com

### Atwater Gift Shop and Massage By Sherry

103 3rd St. N | Atwater  
(320) 894-1558

### Beauty Box Boutique

1305 1st St. S | Willmar  
(320) 808-7463  
www.beautyboxwillmar.com

### Bell Tower Antiques

193 Hwy. 23 N | Spicer  
(320) 796-5515

### Camille's Closet

11 Main St. N | New London  
(320) 347-1065

### Dancing Goat Studio

28 Main St. S | New London  
(320) 905-0702  
kimwendlandt.blogspot.com

### Dragonfly Boutique

102 Central Ave. W | New London  
(320) 905-3427  
www.dragonflyjoy.com

### Fat Freddy's Music

277 Litchfield Ave. SW | Willmar  
(320) 235-6820

### Finley Florence Bridal

61 Main St. S, Suite 4  
New London  
(320) 347-1134  
www.finleyflorencebridal.com

### Flyleaf Book Shop

32 Main St. N | New London  
(651) 334-9692  
309 Lakeland Dr. SE | Willmar  
(320) 262-5171  
www.flyleafbookshop.com

### Glow by J. Boutique

1605 1st St. S | Willmar  
(320) 403-5112  
www.glowbyj.shop

### Kultur Hus

211 Front St. | Sunburg  
(320) 366-3966  
www.kulturhus.net

### L & J Antiques

614 Benson Ave. SW | Willmar  
(320) 231-3748

### Late Bloomers Floral & Gift

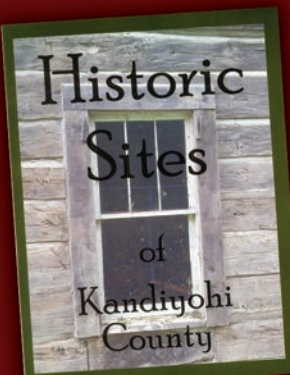
1303 1st St. S, Suite 8 | Willmar  
(320) 235-4940  
www.willmarflowers.com

### Lucky Duck

24 Main Street N | New London  
(320) 347-1137  
www.luckyduckmn.com



610 Highway 71 NE | Willmar, MN 56201  
320-235-1881 | kandhist@msn.com  
Hours: Monday - Friday 9am-4pm  
Saturdays (Memorial Day-Labor day) 10am-2pm  
@kandhistory on Facebook  
Instagram and Twitter #kandiyohihistory



**Get the Historical Sites of Kandiyohi County Guide Book**

**FOR ONLY \$2.00**

at the Kandiyohi County Historical Society

**Regular price \$7.50**

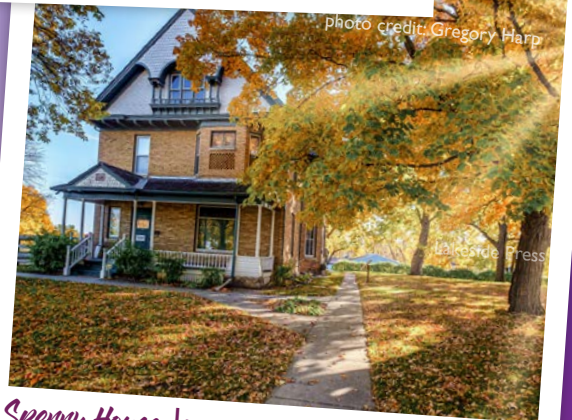
Show this coupon at checkout

# Travel back in time

Explore the historical locations throughout Kandiyohi County  
(see map on page 37)



Knudson Cabin | Sunburg



Sperry House | Willmar



War Memorial Room | Willmar



## SPECIALTY SHOPS & BOUTIQUES

### Mr. B's Chocolates

1707 Technology Drive, Suite 101  
Willmar | (320) 235-1313  
www.mrbchocolates.com

### Paisley Threads

14 Main St. S | New London  
(320) 347-1111  
www.paisleythreads.com

### Shopee 14

1605 1st St. S | Willmar  
facebook.com/shopee14

### The Fan Zone

1605 1st St. S | Willmar  
(320) 222-9663  
www.fanzonemn.com

### The Happy Sol

26 Main St. N | New London  
(320) 354-8110  
www.thehappysol.com

### The Red Poppy

615 3rd St. | Prinsburg  
(320) 444-1815

### The Rugged Sun

26 Main St. N | New London  
(320) 354-8110  
www.thehappysol.com/mens

### Three Fingers Sawmill

4004 Hwy. 71 NE | Willmar  
(320) 235-1215  
www.threefingersawmill.com

### Three Sisters Furnishings

2550 MN Hwy. 9 NE | New London  
(320) 354-4480  
www.threesistersfurnishings.com

### The Vintage Hub

344 Atlantic Ave. | Kandiyohi  
(320) 894-6958

### Urban Escape Boutique

130 Lake Ave. N | Spicer  
(320) 444-7019  
www.shopurbanescape.com

## West Central Rockhounds

1605 1st St. S, Ste D10 | Willmar  
(320) 262-3451  
www.wcrockhounds.com

## Whitney Music

913 Hwy. 71 NE | Willmar  
(320) 214-9433  
www.whitneymusic.com

## SPORTS

### Atwater Karting Speedway

Located approximately 1 mile east of  
Atwater on State Hwy. 12  
(320) 368-2522  
www.atwaterkartingspeedway.com

### Freedom Ridge

1130 195th St. SE | Atwater  
(612) 386-5446  
www.freedomridgerocks.com

### Glacial Ridge Curling

(320) 403-3398  
www.glacialridgecurling.org

### Green Lake BMX

221 South St. W | Spicer  
(320) 403-2473  
www.greenlakebmx.com

### Grind Central Skate Park

Willmar Ave. SW & 22nd St. SW  
Willmar | (320) 235-1454

### KRA Speedway

At the Kandiyohi County  
Fairgrounds  
801 7th St. NW | Willmar  
(320) 905-9280  
www.kraspeedway.com

### Willmar Stingers

(Northwoods Baseball League)  
Bill Taunton Stadium at Baker Field  
1401 SW 22nd St. | Willmar  
(320) 222-2010  
www.willmarstingers.com

### Willmar WarHawks

(North American Hockey League)  
Willmar Civic Center  
2707 Arena Drive | Willmar  
www.willmarwarhawks.com

## WINERIES AND BREWERIES

### Foxhole Brewhouse

313 4th St. SW | Willmar  
(320) 441-2071  
www.foxholebrewhouse.com

### Glacial Ridge Winery

15455 Old Mill Rd. | Spicer  
(320) 796-9463  
www.glacialridgewinery.com

## Goat Ridge Brewing Co.

17 Central Ave. W | New London  
(320) 354-2383  
www.goatridgebrewing.com

## Hinterland Vineyard

3060 120th Ave. SE | Clara City  
(320) 847-3060  
www.hinterlandvineyards.com



**THREE 3 SISTERS**

**320-354-4480**  
2550 Hwy 9 NE  
New London, MN 56273

**Lakes Area's Custom Furniture,  
Home Décor and Gift Destination!**

- Amish Furniture
- Delectable Pantry items
- Home Décor
- Outdoor Furniture
- Unique Gifts

Monday - Wednesday 10:00am-4:00pm  
Thursday: 10:00am-6:00pm  
Friday - Saturday: 9:00am-5:00pm  
Sunday: 11:00am-3:00pm

**www.threesistersfurnishings.com**

# Shop till you drop



**Three Sisters Furnishings**  
New London



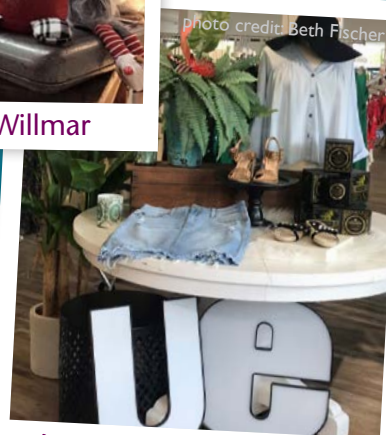
**Flyleaf Book Shop**  
New London



**Shopee 14** | Willmar



**Ali J Boutique**  
New London



**Urban Escape** | Spicer





photo credit: Bailey Hovland

# On The Water

Bring your kayaks or canoes during your next visit to Kandiyohi County and experience the abundant paddling opportunities on our lakes and the Crow River.

Water trail maps are available online at [www.willmarlakesarea.com](http://www.willmarlakesarea.com) or at the Willmar Lakes Area Convention and Visitors Bureau office on East Highway 12 in Willmar.



# Fishing

Fishing is a great opportunity for recreation in Kandiyohi County for locals and visitors alike. With over 350 lakes, ponds, streams and the Crow River, the opportunities for angling enthusiasts are nearly endless.

In winter, whole communities of ice houses appear across our many lakes. The camaraderie they create helps the hardy ice anglers push back against the cold of a long Minnesota winter.

## Game fish found in Kandiyohi County Lakes



Sunfish



Crappie



Largemouth Bass



Smallmouth Bass



Walleye

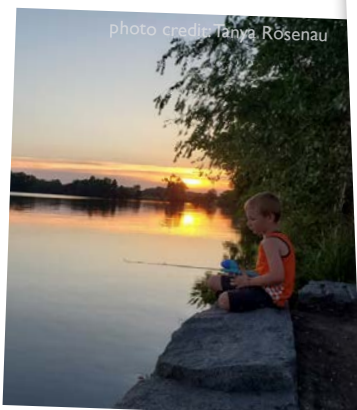
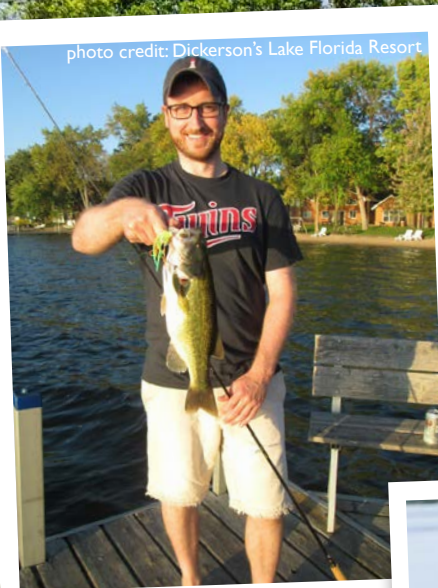


Northern Pike

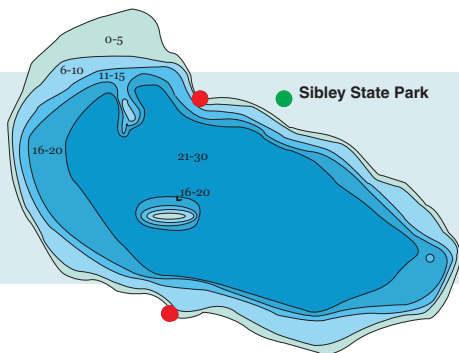
Our thanks to the Minnesota DNR for supplying us with information to reproduce the lake maps.

For more information, visit their website at: [www.dnr.state.mn.us](http://www.dnr.state.mn.us).

(Sizes of lake maps are not proportionate to each other. Check acreage for lake size.)







## LAKE ANDREW

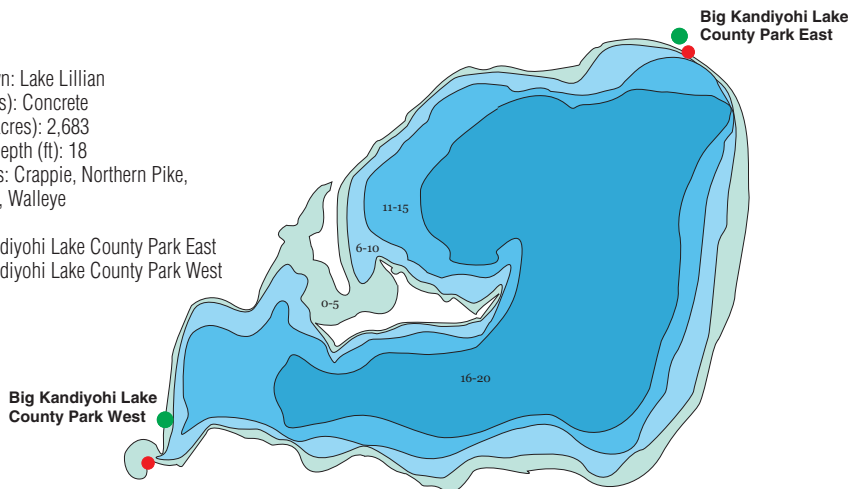
Located 6 miles west of New London with Sibley State Park bordering the north and northwest shore line areas. DNR public access sites are on the south and northwest side of the lake. Recently, walleye and northern pike are the most abundant game fish species. The public swimming beach is in Sibley State Park.

Nearest Town: New London  
Ramp Type(s): Concrete  
Lake Area (acres): 759  
Maximum Depth (ft): 26  
Fish Species: Crappie, Largemouth Bass, Northern Pike, Sunfish, Walleye  
Camping: Sibley State Park

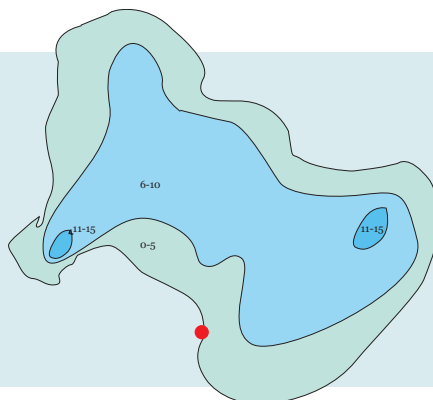
## BIG KANDIYOHI LAKE

Located 4 miles northwest of Lake Lillian with Big Kandiyohei Lake County Park East on the northeast side and Big Kandiyohei Lake County Park West on the southwest side. There are public accesses and swimming beaches available in both county parks.

Nearest Town: Lake Lillian  
Ramp Type(s): Concrete  
Lake Area (acres): 2,683  
Maximum Depth (ft): 18  
Fish Species: Crappie, Northern Pike, Sunfish, Walleye  
Camping: Big Kandiyohei Lake County Park East, Big Kandiyohei Lake County Park West



Big Kandiyohei Lake County Park West



## LAKE CALHOUN

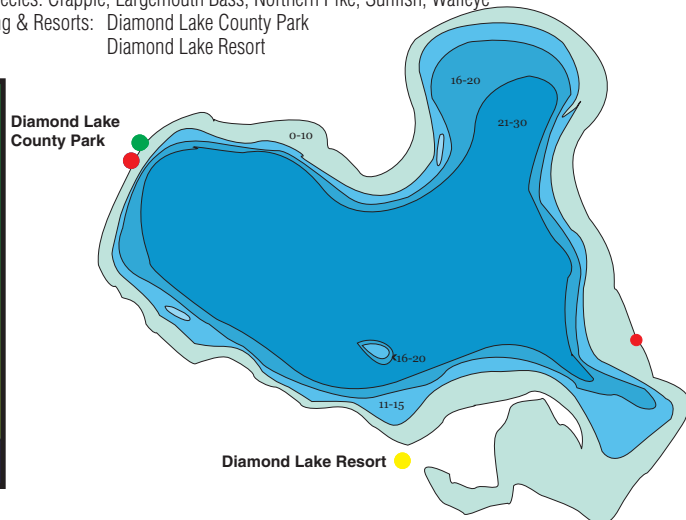
Located 7 miles east of Spicer with a DNR public access on the south shore. Calhoun is most popular as a northern pike fishery.

Nearest Town: Spicer  
Ramp Type(s): Concrete  
Lake Area (acres): 647  
Maximum Depth (ft): 13  
Fish Species: Crappie, Largemouth Bass, Northern Pike, Sunfish, Walleye

## DIAMOND LAKE

Located 4 miles northwest of Atwater with public access available at Diamond Lake County Park on the west shore and a small access on the east shore. Diamond Lake Resort is on the southeast shore of the lake. Anglers report good walleye fishing, especially in early winter.

Nearest Town: Atwater  
Ramp Type(s): Concrete | Lake Area (acres): 1,610 | Maximum Depth (ft): 27  
Fish Species: Crappie, Largemouth Bass, Northern Pike, Sunfish, Walleye  
Camping & Resorts: Diamond Lake County Park, Diamond Lake Resort



Diamond Lake County Park

Diamond Lake Resort

- 0-5
- 6-10
- 11-15
- 16-20
- 21-30
- 31-40
- 41-50
- 51-60
- 61-70
- 71-80
- 81-100
- 100 +

- Parks
- Lodging
- Public Boat Access

# Blake's

## Recreation Rental

### Auto Repair

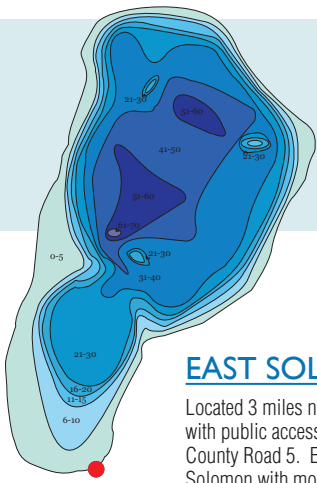
Oil Changes to  
Transmission Overhauls  
30+ Years Experience

Personal Watercraft's  
Pontoon's  
Kneeboards, Wakeboards,  
Kayaks, Tubes

## 320.974.3501

101 Pleasant Ave W, Atwater, MN 56209





## EAGLE LAKE

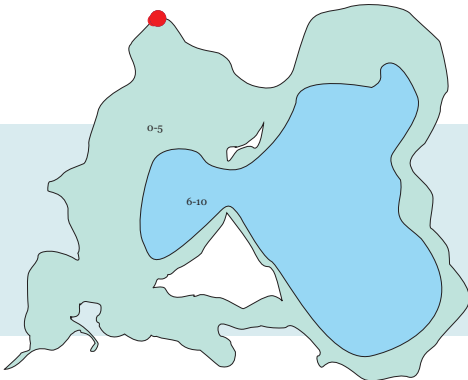
Located 5 miles northeast of Willmar with a public access on the southeast corner of the lake. A deep and popular recreational lake with residential development surrounding all but the northeast corner of the lake.

Nearest Town: Willmar  
Ramp Type(s): Concrete  
Lake Area (acres): 849  
Maximum Depth (ft): 67  
Fish Species: Crappie, Largemouth Bass, Northern Pike, Sunfish, Walleye

## EAST SOLOMON LAKE

Located 3 miles northwest of Willmar on County Road 5 with public access on the northeast side of the lake off of County Road 5. East Solomon Lake outlets to West Solomon with most of the shoreline comprised of undeveloped hardwoods.

Nearest Town: Willmar  
Ramp Type(s): Concrete  
Lake Area (acres): 658  
Maximum Depth (ft): 14  
Fish Species: Largemouth Bass, Northern Pike, Sunfish, Walleye



## LAKE ELIZABETH

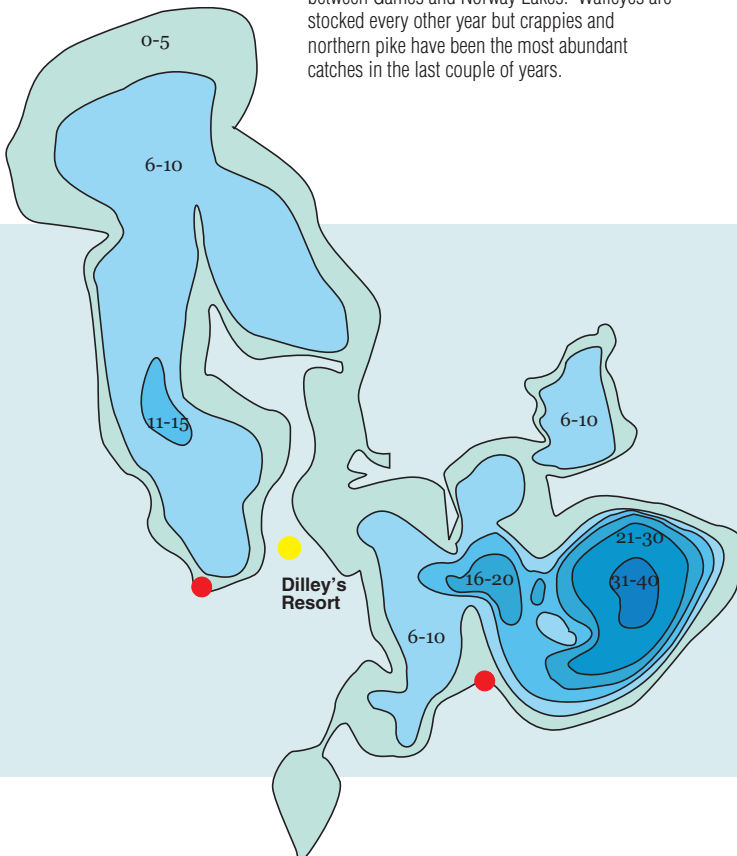
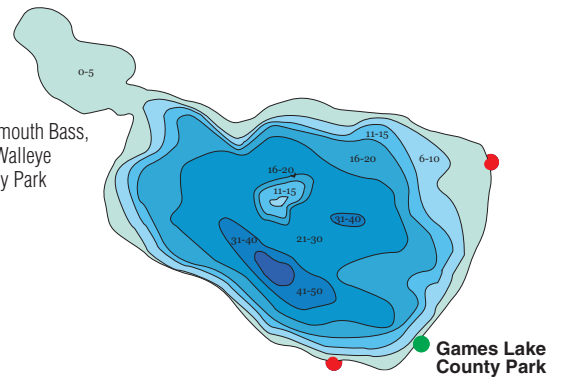
Located 5 miles southwest of Atwater with a public access on the northwest side of the lake. Hardwood trees and wetlands surround the shorelines with an aquatic management area along the south shore. Northern pike have been the most abundant fish in recent years.

Nearest Town: Atwater  
Ramp Type(s): Concrete  
Lake Area (acres): 1,023  
Maximum Depth (ft): 9  
Fish Species: Crappie, Northern Pike, Sunfish, Walleye

## GAMES LAKE

Located about 7 miles northwest of New London with public boating accesses located on the east side and in Games Lake County Park on the southeast side of the lake. A channel that is navigable to boat traffic exists between Games and Norway Lakes. Walleyes are stocked every other year but crappies and northern pike have been the most abundant catches in the last couple of years.

Nearest Town: Sunburg  
Ramp Type(s): Concrete  
Lake Area (acres): 521  
Maximum Depth (ft): 42  
Fish Species: Crappie, Largemouth Bass, Northern Pike, Sunfish, Walleye  
Camping: Games Lake County Park



## NORWAY LAKE

Located 8 miles west of New London with two DNR public accesses. One access is located on the south shore of West Norway Lake, 1 mile east of County Road 1 and the other on the south shore of the main basin, 1 mile north of County Road 40. Norway Lake is a large moderately deep lake with three basins. Dilley's RV Resort is located on the southeast side of the west basin.

Nearest Town: Sunburg  
Ramp Type(s): Concrete  
Lake Area (acres): 2,339  
Maximum Depth (ft): 33  
Fish Species: Crappie, Largemouth Bass, Northern, Pike, Sunfish, Walleye  
Camping: Dilley's Resort

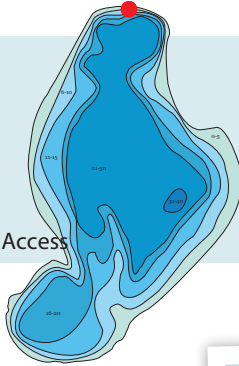
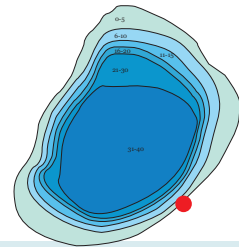


- 0-5
- 6-10
- 11-15
- 16-20
- 21-30
- 31-40
- 41-50
- 51-60
- 61-70
- 71-80
- 81-100
- 100 +

## ELKHORN LAKE

Located 2 miles south of Spicer. The public access is located on the east shore off of a residential gravel road that ties into County Road 8. Elkhorn is a deep but small recreational lake with excellent water clarity of 20.75 feet. The lake is known for good largemouth bass and northern pike fishing.

Nearest Town: Spicer  
Ramp Type(s): Concrete  
Lake Area (acres): 79  
Maximum Depth (ft): 41  
Fish Species: Crappie, Largemouth Bass, Northern Pike, Sunfish, Walleye

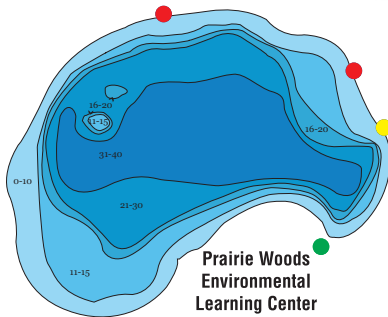
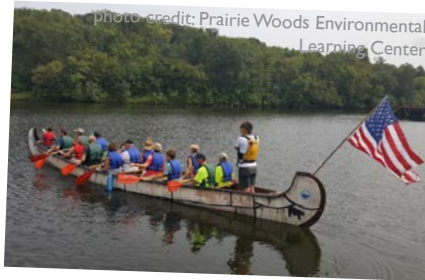


## GEORGE LAKE

Located 3 miles west of Spicer with a public access off of County Road 32 on the north side of the lake. George Lake is a small, moderately deep lake with excellent water clarity. Largemouth bass, crappie, and northern pike have been abundant in the last couple of years.

Nearest Town: Spicer  
Ramp Type(s): Concrete  
Lake Area (acres): 228  
Maximum Depth (ft): 34  
Fish Species: Crappie, Largemouth Bass, Northern Pike, Sunfish, Walleye

- Parks
- Lodging
- Public Boat Access



## LAKE FLORIDA

The feeling of the north woods in central Minnesota, located 6 miles west of Spicer. Two public access sites are present on Florida with one boat ramp along the northside (DNR) and one shore fishing site on the west side. Prairie Woods Environmental Learning Center is located near the southeast shoreline area. Dickerson's Lake Florida Resort is located on the east shore of the lake. Walleyes are stocked every other year in Lake Florida.

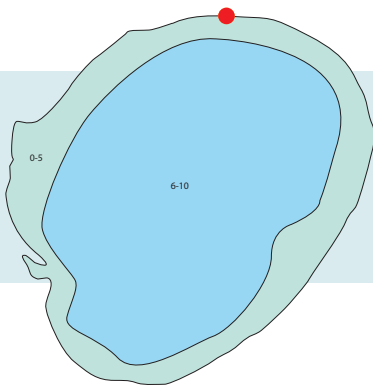
Nearest Town: Spicer  
Ramp Type(s): Concrete  
Lake Area (acres): 705  
Maximum Depth (ft): 40  
Fish Species: Crappie, Largemouth Bass, Northern Pike, Sunfish, Walleye  
Resort: Dickerson's Lake Florida Resort

# Build Sandcastles & Memories

## at Dickerson's Lake Florida Resort

[www.dickersonsresort.com](http://www.dickersonsresort.com)  
320-354-4272





## LAKE LILLIAN

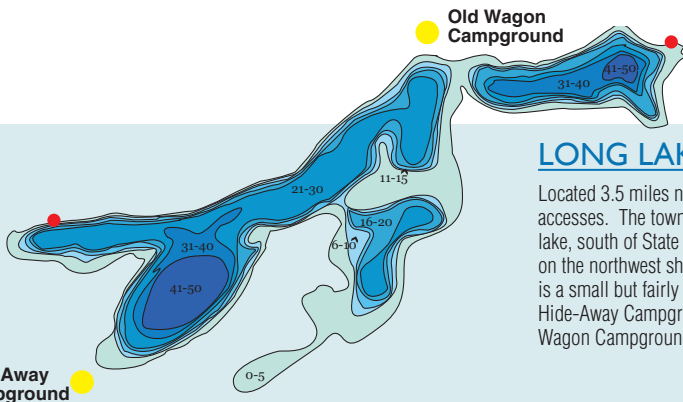
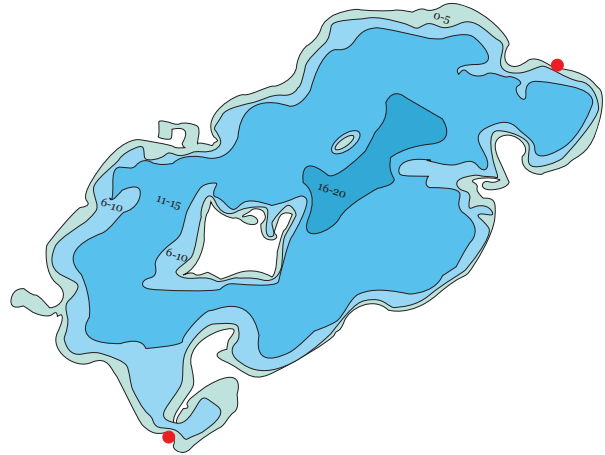
Located directly north of the town of Lake Lillian with a public access on the northeast side, 1/4 mile west of County Road 4. (Note: Motor propelled watercraft prohibited on the lake during open waterfowl season, with the exception of up to a 30# trolling motor.)

Nearest Town: Lake Lillian  
Ramp Type(s): Concrete  
Lake Area (acres): 1,151  
Maximum Depth (ft): 8  
Fish Species: Northern Pike, Sunfish, Walleye

## LONG LAKE

Located 5 miles north of Willmar with two concrete DNR public accesses. One access is located on the northeast shore off County Road 27 and the other on the south side of the lake, north of County Road 25. Long Lake is a large shallow lake with hardwoods, grasslands, wetlands and some residential development. There are several bulrush islands with a large cormorant rookery on the large island.

Nearest Town: Willmar  
Ramp Type(s): Concrete  
Lake Area (acres): 1,568  
Maximum Depth (ft): 16  
Fish Species:  
Largemouth Bass,  
Northern Pike,  
Sunfish, Walleye



## LONG LAKE NORTH

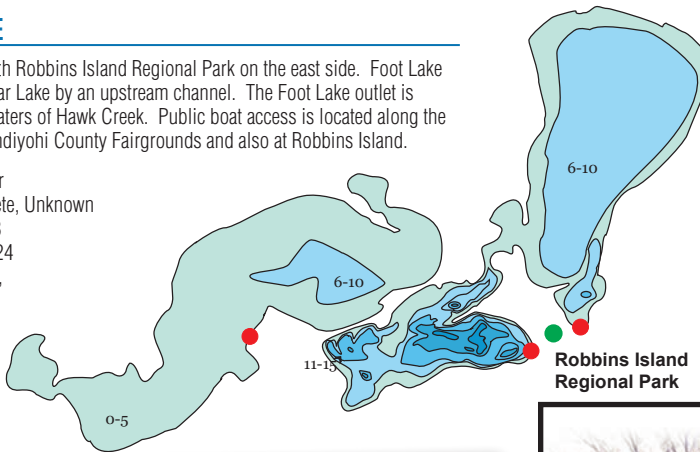
Located 3.5 miles northeast of New London with two public accesses. The township access is on the northeast end of the lake, south of State Highway 23. The concrete DNR access is on the northwest shore south of State Highway 23. Long Lake is a small but fairly deep lake with two resorts/campgrounds. Hide-Away Campground is on the southwest shore and Old Wagon Campground is on the north shore.

Nearest Town: New London  
Ramp Type(s): Gravel, Concrete  
Lake Area (acres): 325  
Maximum Depth (ft): 46  
Fish Species: Largemouth Bass,  
Northern Pike, Sunfish, Walleye  
Camping:  
Hide-Away Campground  
Old Wagon Campground

## FOOT LAKE

Located in Willmar with Robbins Island Regional Park on the east side. Foot Lake is connected to Willmar Lake by an upstream channel. The Foot Lake outlet is considered the headwaters of Hawk Creek. Public boat access is located along the south shore of the Kandiyohi County Fairgrounds and also at Robbins Island.

Nearest Town: Willmar  
Ramp Type(s): Concrete, Unknown  
Lake Area (acres): 503  
Maximum Depth (ft): 24  
Fish Species: Crappie,  
Northern Pike,  
Sunfish, Walleye



## WILLMAR LAKE

Located in Willmar with Eagle Creek Golf Course bordering the north shore of the lake and Robbins Island Regional Park on the south shore. Access is on the south side of the lake from Robbins Island.

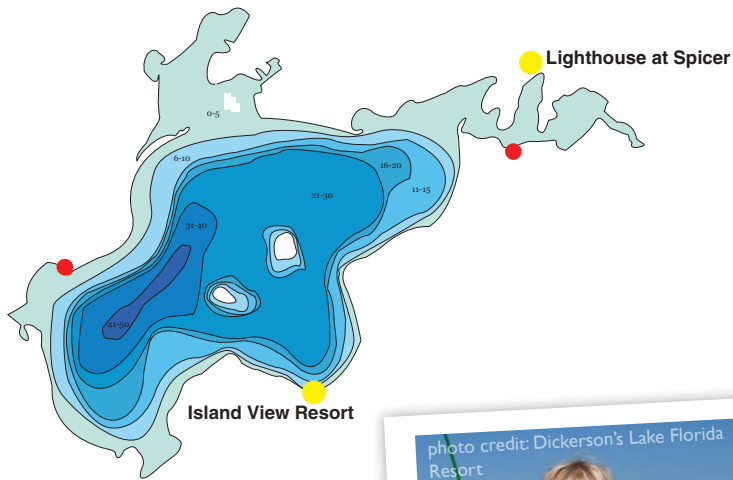
Nearest Town: Willmar  
Ramp Type(s): Concrete  
Lake Area (acres): 636  
Maximum Depth (ft): 14  
Fish Species: Crappie, Northern Pike, Sunfish, Walleye



photo credit: John Kellen







## NEST LAKE

Located 2 miles north of Spicer with 2 public accesses. One access is on the east side of the lake off of State Highway 23 and the other is on the west side of the lake off of County Road 9. The lake's major inlet is where the Crow River enters along the north shore and the outlet drains into Green Lake at the Olde Mill Inn dam. Island View Resort is on the south shore of the lake. Smallmouth bass, crappies, walleyes and

northern pike numbers are currently high in this lake.

Nearest Town: Spicer  
Ramp Type(s): Concrete  
Lake Area (acres): 969  
Maximum Depth (ft): 40  
Fish Species: Crappie, Largemouth Bass, Northern Pike, Smallmouth Bass, Sunfish, Walleye  
Camping & Resort: Island View Resort  
Lighthouse at Spicer



photo credit: Trudie Guptill

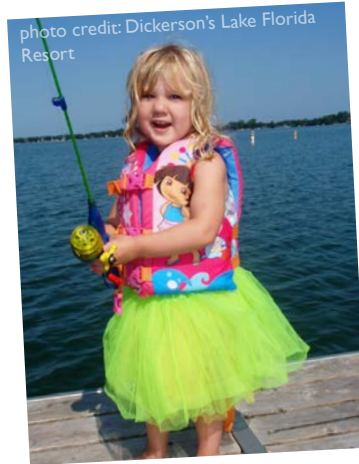


photo credit: Dickerson's Lake Florida Resort



photo credit: Linda Eisenreich



ISLAND VIEW RESORT on beautiful Nest Lake is a well-known, popular resort. You will be greeted with a warm welcome and will find fun activities, clean accommodations, and quiet relaxation. Our spacious, tree-shaded grounds with nicely-spaced cabins provide a peaceful, private atmosphere.



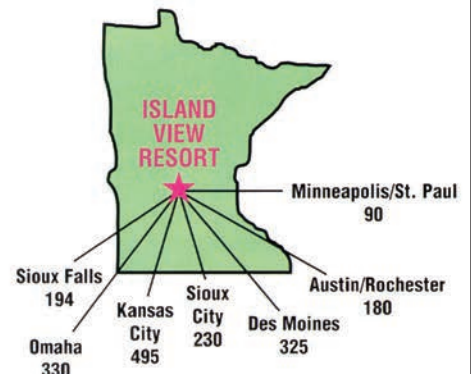
We look forward to seeing you soon!  
—Darin & Jess

Paid For By The Little Crow Tourism Association



[vacation@islandviewresort.info](mailto:vacation@islandviewresort.info)  
[www.islandviewresort.ws](http://www.islandviewresort.ws)

5910 132nd Ave NE • Spicer, MN 56288  
(507) 276-9783 • (800) 421-9708





## GREEN LAKE

Located in Spicer with 5 public accesses. Green Lake is a large and deep lake with good water clarity. Green Lake is known for its recreational opportunities during the summer months with Saulsbury Beach in Spicer being a very popular public swimming area. Green Lake County Park is located on the northeast corner of the lake. Green Lake Bible Camp is on the southwest side of the lake.

Nearest Town: Spicer

Ramp Type(s): Concrete

Lake Area (acres): 5,569

Maximum Depth (ft): 110

Fish Species: Crappie, Largemouth Bass, Northern Pike, Smallmouth Bass, Sunfish, Walleye

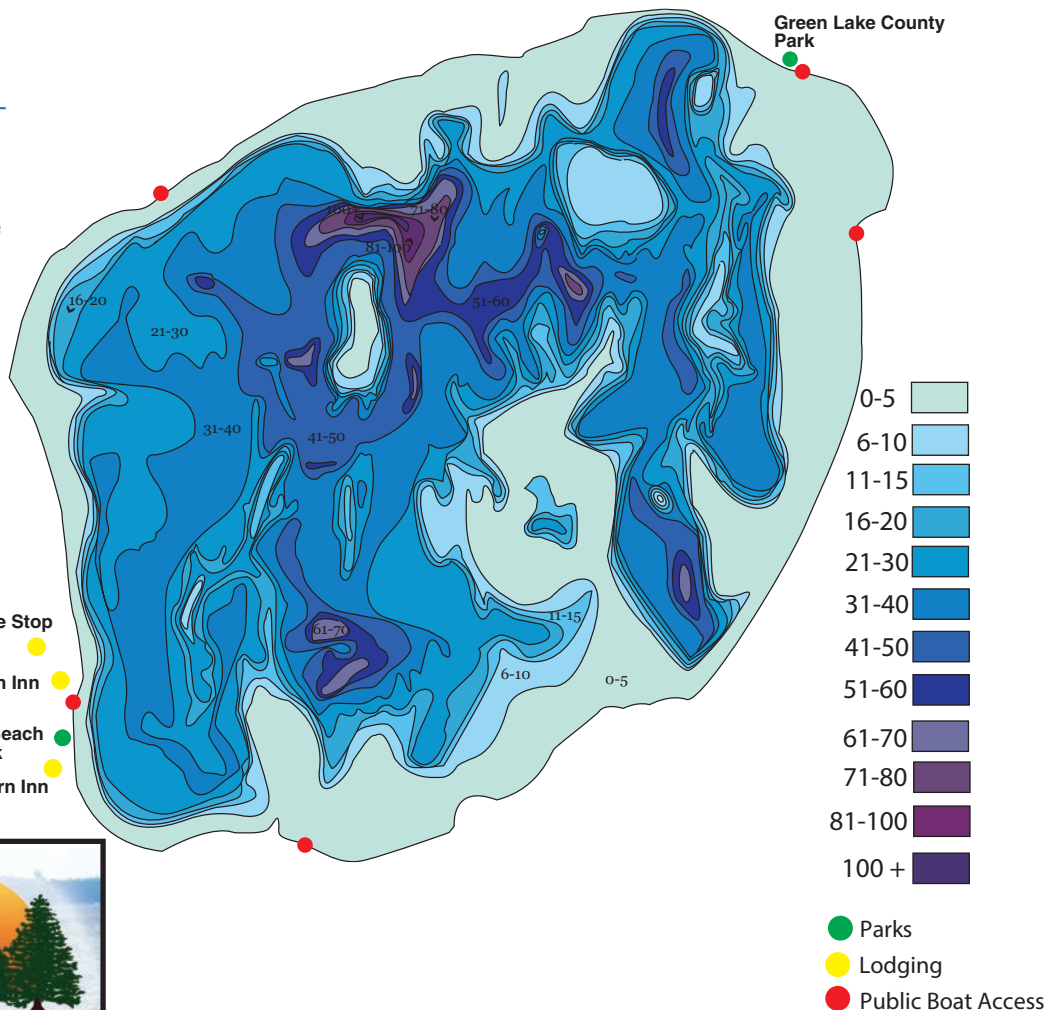
Camping & Lodging:

Green Lake County Park

Hampton Inn

Northern Inn

The Whistle Stop



**Northern Inn**  
**Hotel & Suites**  
*on Green Lake*

- Convenient Location
  - beach, boat & bike trail access
  - restaurants nearby
  - shopping within minutes
- Indoor Pool & Hot Tub
- Jacuzzi Suite with Fireplace
- Free Breakfast Bar
- Wireless Internet

154 Lake Ave. S  
Spicer, MN 56288  
320.796.2091  
[www.NorthernInn.com](http://www.NorthernInn.com)

## RINGO LAKE

Located 2.5 miles west of Spicer with a boat access off the northwest corner on County Road 29 and a shore angling access off of Highway 71. The shore access includes parking, a black top trail and granite platforms for shore anglers.

Nearest Town: Spicer

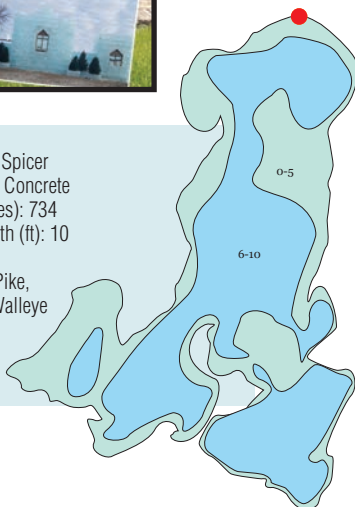
Ramp Type(s): Concrete

Lake Area (acres): 734

Maximum Depth (ft): 10

Fish Species:

Northern Pike,  
Sunfish, Walleye



**Call the Waterfront Specialists!**

**JANE VIKSE**  
REAL ESTATE

**JaLanny Rupp**  
320.894.4512  
Broker/Agent

**Jenna Vikse**  
941.400.6343  
Administrative Assistant

**Jasmine Vikse**  
320.894.3862  
Realtor

**Jane Vikse**  
320.979.0632  
Broker/Owner

[www.janevikserealestate.com](http://www.janevikserealestate.com)

145 Lake Ave N • Spicer, MN 56288 • 320.796.1000    1425 1st St S • Willmar, MN 56201 • 320.262.5474



# Sibley State Park

An amazing all season destination to enjoy the outdoors



*Hike The Trails*



*Ride The Trails*



*Camp Out*



*Swim*



*Snowshoe*

Sibley State Park is a favorite stop for visitors to Kandiyohi County. Boasting 2,936 acres of forests, hills, lakes and trails, the park offers recreation opportunities for all outdoor enthusiasts. Visitors can also enjoy boating, swimming, fishing and canoeing on Lake Andrew.

Open Daily 8:00 a.m. - 10:00 p.m.

800 Sibley Park Road Northeast | New London | (320) 354-2055  
email: [sibley.statepark@state.mn.us](mailto:sibley.statepark@state.mn.us) | [www.dnr.state.mn.us/state\\_parks/sibley](http://www.dnr.state.mn.us/state_parks/sibley)



# Prairie Woods Environmental Learning Center



Indoor Climbing Wall



Paddle



Archery



Giant Ladder



Yurt

Prairie Woods Environmental Learning Center is a regional center for environmental education and outdoor recreation. They provide an exciting array of hands-on learning adventures for all ages, as well as beautiful facilities for meetings and special events.

Call ahead to make reservations for program activities, facility use, and equipment rental.

## CHALLENGE COURSE

Welcome to our high adventure learning laboratory! Prairie Woods' challenge course includes:

- A 40 foot tall three-sided outdoor climbing tower
- Two Giant Ladders
- Two Flying Squirrels
- An indoor climbing wall
- Initiative games

## ENVIRONMENTAL EDUCATION

Environmental programs combine guided exploration, classroom activities, outdoor recreation and community-building to provide the best possible learning experience. Programs are presented in ways kids learn best: with engaging, interdisciplinary activities, in small groups.

## GARY WESTBY SHOOTING RANGE

The Gary Westby Educational Shooting Sports range offers opportunities for sportsmen, sportswomen and youth. The Range consists of a five-stand sporting clays range and a ten-bench .22 smallbore rifle range.

## TRAILS

Prairie Woods maintains approximately 10km of trails over rolling glacial terrain, through woods and prairies, near ponds and wetlands. The trail network covers much of PWELC's 500 acres. New this year, 4.5 miles of mountain bike trails.

## EQUIPMENT RENTALS AVAILABLE

Enjoy an afternoon or a whole day of kayaking, fat tire biking, cross country skiing, snowshoeing, or kicksledding by reserving equipment through Prairie Woods Environmental Learning Center. Equipment rentals will be done on a reservation basis. Please call at least 24 hours in advance. If you would like equipment reserved for the weekend, call by Noon on Friday.

12718 10th Street NE | Spicer  
(320) 354-5894 | [www.prairiewoodselc.org](http://www.prairiewoodselc.org)



# Trail Fever



photo credit: Sydney Fischer



photo credit: Sibley State Park



photo credit: BikeWillmar



photo credit: Gregory Harp



photo credit: Gregory Harp



photo credit: Sydney Fischer

photo credit: Lakeside Press



## BIKE TRAILS

Scenic pathways make our area a destination for biking enthusiasts. Short and long trails intersect to make miles of riding fun. Some of our favorite biking trails include the Glacial Lakes State Trail, the Eagle Lake Trail, Robbins Island trails and the beautiful road route around Green Lake. Bring your bike and explore the Willmar Lakes Area or participate in one of our area's biking events. Don't have a bike? Rent one from one of ten BikeWillmar bike share hubs. (see page 9)

## GLACIAL LAKES STATE TRAIL

The Glacial Lakes State Trail is located on a former Burlington Northern Railroad grade and is generally level and wheelchair accessible. The trail is paved and connects the cities of Willmar, Spicer, New London and Hawick. It continues beyond the Kandiyohi/Stearns County line. The segment from Willmar to New London also has 10 miles of a parallel grass treadway for horseback riding, while the New London to the Kandiyohi/Stearns County line segment has grass shoulders to accommodate this activity.

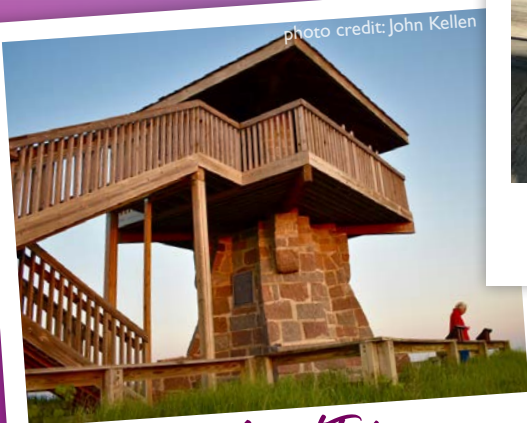
The Glacial Lakes State Trail connects to Sibley State Park via 3 miles of paved shoulder along County Road 148 West of New London. The trail also connects with many miles of groomed snowmobile trails in the Kandiyohi County trail system. Maps of the Willmar Lakes Area trails can be found at the Convention & Visitors Bureau office in Willmar, at several travel information racks throughout Kandiyohi County and also on our website at [www.willmarlakesarea.com](http://www.willmarlakesarea.com).

## GLACIAL RIDGE SCENIC BYWAY

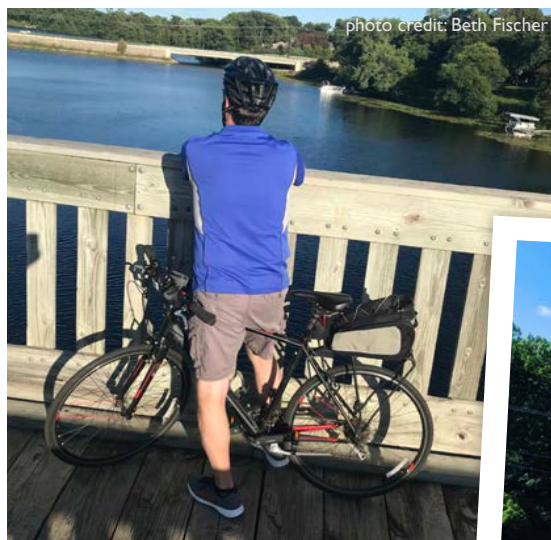
The Glacial Ridge Trail offers something for everyone, whether their interests are historical, cultural, recreational or a simple scenic drive. It offers access to West Central Minnesota's abundant natural resources, while offering modern, convenient travel accommodations. Stop by some of the historical sites found in the Willmar Lakes Area like the Guri Endreson Cabin, Old Log Church and the Kandiyohi County Historical Museum.

The Glacial Ridge Trail passes by some of our local lakes and connects with the Glacial Lakes State Trail and Sibley State Park. You can create your own adventure on the Glacial Ridge Scenic Byway at [www.glacialridgebyway.com](http://www.glacialridgebyway.com).

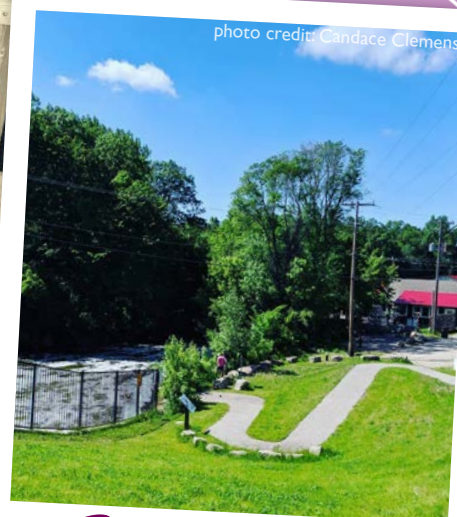
# Instagram Worthy Spots



*Mount Tom*  
Sibley State Park | New London



*Glacial Lakes State Trail*  
Bridge Over Nest Lake



*Trail by Crow River*  
New London



# Splash, Swing & Slide



photo credit: City of Willmar

*Splash Pad at Rice Park | Willmar*



photo credit: Julie Woltjer

*Whittier Park | Kandiyohi*



photo credit: City of Willmar

*Dog Park | Willmar*



*Robbins Island Destination  
Playground | Willmar*



photo credit: Sydney Fisher

*Wildcat Cove | Spicer*



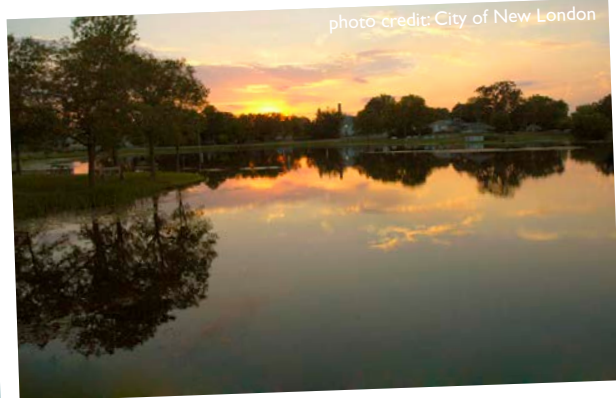


photo credit: City of New London

*Mill Pond Beach | New London*



photo credit: Lacey Larson

*Archery Park | Willmar*



photo credit: Bill Zimmer

*Green Lake Saultsbury Beach  
Spicer*



photo credit: Sydney Fischer

*Robbins Island Disc Golf Course  
Willmar*



photo credit: City of Willmar

*Miller Park | Willmar*

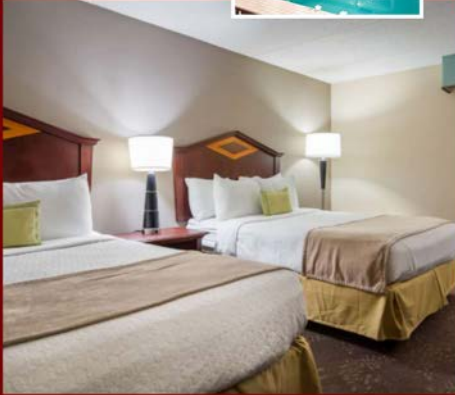


photo credit: Erik Homme / Lake Lillian News

*City Park | Lake Lillian*

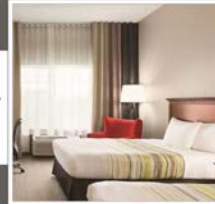
Find a complete  
park directory at  
[www.willmarlakesarea.com](http://www.willmarlakesarea.com)





Free Breakfast | Fitness Center  
Indoor Pool and Whirlpool  
Green Mill Restaurant | Ruff's Wings & Sports Bar  
Willmar Conference Center

320-235-6060  
[www.bestwesternplus.com](http://www.bestwesternplus.com)



Free Breakfast | Fitness Center  
Remodeled Guest Rooms  
Whirlpool Suites  
Water Slide Available on Weekends  
Close to Restaurants

320-214-0300  
[www.radissonhotels.com](http://www.radissonhotels.com)



Free Breakfast | Fitness Center  
Indoor Pool | Outdoor Patio & Fireplace  
On the Shore of Green Lake  
Bicycle & Pontoon Rental

320-796-3000  
[www.hamptoninnspicer.com](http://www.hamptoninnspicer.com)



Free Breakfast | Fitness Center  
Indoor Pool and Whirlpool  
100% Non-Smoking  
Green Mill Restaurant and Ruff's Wings & Sports Bar  
Willmar Conference Center

320-231-2601  
[www.ihg.com](http://www.ihg.com)



Green Mill Restaurant  
Pizza. Pasta. Cold Beverages. Wings  
Ruff's Wings & Sports Bar  
Tap House. Burgers. Appetizers

320-214-7833  
[www.ruffswings.com](http://www.ruffswings.com) & [greenmill.com](http://greenmill.com)

## Willmar Conference Center

CONVENTIONS | WEDDINGS | MEETINGS | EVENTS

- Up to 1 000 people
- 7 Galleries + Board Room
- Multiple Breakout Options
- New & Complimentary AV equipment
- Complimentary Parking
- Complimentary WiFi for all your guests
- On-site Catering
- On-site Meeting Planner
- 4 Hotel Options










You have our commitment to exceptional service, a first class facility and a perfect event Destination!

320-444-9480 | [WillmarConferenceCenter.com](http://WillmarConferenceCenter.com)



# Hotels

 Free Breakfast  
 Laundry Facilities  
 Meeting Rooms

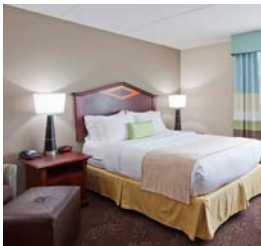
 Pets Allowed  
 Refrigerators / Microwaves  
 Suites  
 Swimming Pool



**AmericInn by Wyndham**  
 2404 Hwy. 12 E, Willmar, MN 56201  
[www.wyndhamhotels.com/americiinn/willmar-minnesota/americiinn-willmar/overview](http://www.wyndhamhotels.com/americiinn/willmar-minnesota/americiinn-willmar/overview) | [willmar.mn@americiinn.com](mailto:willmar.mn@americiinn.com)  
 (320) 231-1962  
 Number of Rooms: 30



**Hampton Inn Green Lake Resort**  
 100 Lake Ave. N, Spicer, MN 56288  
[www.spicergreenlakeresort.com](http://www.spicergreenlakeresort.com)  
[nancy.larson@tpihospitality.com](mailto:nancy.larson@tpihospitality.com)  
 (320) 796-3000  
 Number of Rooms: 51



**Best Western Plus & Willmar Conference Center**  
 2100 Hwy. 12 E, Willmar, MN 56201  
[www.bestwesternwillmar.com](http://www.bestwesternwillmar.com)  
[laurie.varpness@tpihospitality.com](mailto:laurie.varpness@tpihospitality.com)  
 (320) 235-6060  
 Number of Rooms: 92



Restaurant on-site



**Holiday Inn Express & Suites**  
 250 23rd St. SE, Willmar, MN 56201  
[www.hiexpress.com/willmar](http://www.hiexpress.com/willmar)  
[laurie.varpness@tpihospitality.com](mailto:laurie.varpness@tpihospitality.com)  
 (320) 231-2601  
 Number of Rooms: 73



**Country Inn & Suites**  
 201 28th Ave. SE, Willmar, MN 56201  
[www.countryinns.com/willmarmn](http://www.countryinns.com/willmarmn)  
[gm@countryinnwillmar.com](mailto:gm@countryinnwillmar.com)  
 (320) 214-0300  
 (800) 456-4000  
 Number of Rooms: 50 / 90ft. Waterslide



**Lakeview Inn**  
 1212 Hwy. 71 Srv. Rd. NE, Willmar, MN 56201  
[www.lakeviewinnmn.com](http://www.lakeviewinnmn.com)  
 (320) 235-3424  
 (800) 718-3424  
 Number of Rooms: 31



**Cozy Inn**  
 1501 19th Ave. SE, Willmar, MN 56201  
[www.willmarcozyinn.com](http://www.willmarcozyinn.com)  
[owner@willmarcozyinn.com](mailto:owner@willmarcozyinn.com)  
 (320) 222-2699  
 Number of Rooms: 21



Limited



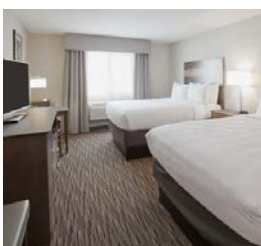
**Northern Inn Hotel & Suites**  
 154 Lake Ave. S, Spicer, MN 56288  
[www.northerninn.com](http://www.northerninn.com)  
[staff@northerninn.com](mailto:staff@northerninn.com)  
 (320) 796-2091  
 (800) 941-0423  
 Number of Rooms: 31



**Days Inn by Wyndham**  
 225 28th St. SE, Willmar, MN 56201  
[www.wyndhamhotels.com/days-inn/willmar-minnesota/days-inn-willmar/overview](http://www.wyndhamhotels.com/days-inn/willmar-minnesota/days-inn-willmar/overview)  
 (320) 231-1275  
 (877) 241-5235  
 Number of Rooms: 59



**Super 8 by Wyndham**  
 2655 1st St. S, Willmar, MN 56201  
[www.wyndhamhotels.com/super-8/willmar-minnesota/super-8-willmar/overview](http://www.wyndhamhotels.com/super-8/willmar-minnesota/super-8-willmar/overview)  
[wlmsuper8@gmail.com](mailto:wlmsuper8@gmail.com)  
 (320) 235-4444  
 (800) 800-8000  
 Number of Rooms: 59



**GrandStay Hotel & Suites**  
 15982 Hwy. 23 NE, Spicer, MN 56288  
[www.littlecrowresort.com](http://www.littlecrowresort.com)  
[littlecrow@grandstay.net](mailto:littlecrow@grandstay.net)  
 (320) 347-1450  
 Number of Rooms: 51





# Camping

County Park reservations can be made online at [https://www.kcmn.us/departments/county\\_parks/reservations.php](https://www.kcmn.us/departments/county_parks/reservations.php)

Visit [www.willmarlakesarea.com](http://www.willmarlakesarea.com) for a complete amenities listing.



**Big Kandiyohi Lake County Park East**  
(May-Sept.) Big Kandiyohi Lake  
9144 123rd Ave. SE  
Lake Lillian, MN 56253  
[countypark.bigkandieast@kcmn.us](mailto:countypark.bigkandieast@kcmn.us)  
(320) 664-4707  
Number of Sites: 80  
Seasonal Rates Available



**Games Lake County Park**  
(May - Oct.) Games Lake  
20944 County Rd. 5 NW  
New London, MN 56273  
[countyparkgames@kcmn.us](mailto:countyparkgames@kcmn.us)  
(320) 354-4453  
Number of Sites: 56  
Camper Cabins: 2



**Big Kandiyohi Lake County Park West**  
(May-Sept.) Big Kandiyohi Lake  
14391 45th St. SE  
Lake Lillian, MN 56253  
[countypark.bigkandiwest@kcmn.us](mailto:countypark.bigkandiwest@kcmn.us)  
(320) 995-6599  
Number of Sites: 94  
Seasonal Rates Available



**Lighthouse at Spicer**  
(Apr. 15 - Oct. 15) Nest Lake  
7309 153rd Ave. NE  
Spicer, MN 56288  
[www.lighthouseatspicer.com](http://www.lighthouseatspicer.com)  
[lighthouseatspicer@gmail.com](mailto:lighthouseatspicer@gmail.com)  
(320) 796-2224  
Number of Sites: 6



**Diamond Lake County Park**  
(May - Sept.) Diamond Lake  
6903 County Rd. 4 NE  
Kandiyohi, MN 56251  
[countypark.diamond@kcmn.us](mailto:countypark.diamond@kcmn.us)  
(320) 974-8520  
Number of Sites: 80 / 50 Seasonal



**Old Wagon Campground**  
(May - Sept.) North Long Lake  
21611 132nd St. NE  
Hawick, MN 56273  
[danakemen@tds.net](mailto:danakemen@tds.net)  
(320) 354-2165  
Number of Sites: 28 / 92 Seasonal



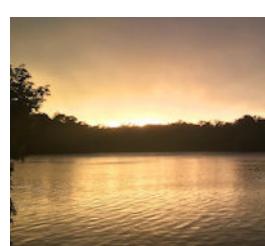
**Dilley's Resort**  
(May 1 - Sept. 15) West Norway Lake  
6489 193rd Ave. NW  
Pennock, MN 56279  
[rdilleyandresort@outlook.com](mailto:rdilleyandresort@outlook.com)  
(320) 894-0962 | (320) 354-4266  
Number of Sites: 30 / 30 Seasonal



**Sibley State Park**  
(Open year-round) Lake Andrew  
800 Sibley Park Rd. NE  
New London, MN 56273  
[www.dnr.state.mn.us/state\\_parks/sibley](http://www.dnr.state.mn.us/state_parks/sibley)  
[sibley.statepark@state.mn.us](mailto:sibley.statepark@state.mn.us)  
(320) 354-2055  
Number of Sites: 132 / 4 Camper Cabins



**Green Lake County Park**  
(May - Sept.) Green Lake  
12381 N Shore Dr.  
Spicer, MN 56288  
[countypark.green@kcmn.us](mailto:countypark.green@kcmn.us)  
(320) 796-5564  
Number of Sites: 61 / 22 Seasonal



**Westrich RV Park**  
(May 1 - Sept. 30) Woodcock Lake  
720 Agnes St.  
Spicer, MN 56288  
[www.westrichrvpark.com](http://www.westrichrvpark.com)  
[lynn@westrichrvpark.com](mailto:lynn@westrichrvpark.com)  
(320) 796-0161  
Number of Sites: 84 / 84 Seasonal



**Hide-Away Campground**  
(May-Sept.) Long Lake North  
11890 199th Ave. NE  
New London, MN 56273  
[www.hide-awaycampground.com](http://www.hide-awaycampground.com)  
[jPulsifer@rocketmail.com](mailto:jPulsifer@rocketmail.com)  
(320) 354-2148  
Number of Sites: 40 / 28 Seasonal



**Ye Olde Mill Inn Resort**  
(Apr. 15 - Oct. 15) Green Lake  
7911 N Shore Dr.  
Spicer, MN 56288  
[oldmill8@yahoo.com](mailto:oldmill8@yahoo.com)  
(320) 796-2212  
Number of Sites: 42



# Resorts



**Diamond Lake Resort**  
(Open Year-Round) Diamond Lake  
14800 49th Ave. SE  
Atwater, MN 56209  
[www.diamondlakeresortmn.com](http://www.diamondlakeresortmn.com)  
[fun@diamondlakeresortmn.com](mailto:fun@diamondlakeresortmn.com)  
(320) 444-5440  
Number of Units: 6

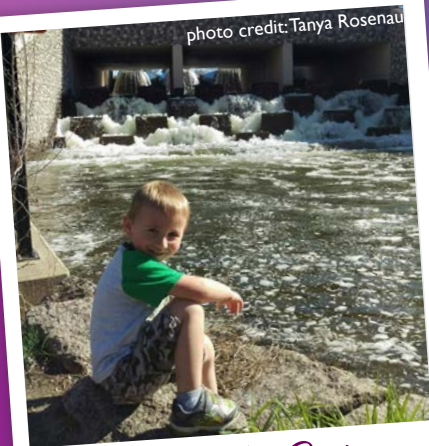


**Island View Resort**  
(May 1 - Sept. 30) Nest Lake  
5910 132nd Ave. NE  
Spicer, MN 56288  
[www.islandviewresort.ws](http://www.islandviewresort.ws)  
[vacation@islandviewresort.info](mailto:vacation@islandviewresort.info)  
(507) 276-9783 | (800) 421-9708  
Number of Units: 13



**Dickerson's Lake Florida Resort**  
(May-Oct.) Lake Florida  
13194 2nd St. NE  
Spicer, MN 56288  
[www.dickersonsresort.com](http://www.dickersonsresort.com)  
[dickersonsresort@tds.net](mailto:dickersonsresort@tds.net)  
(320) 354-4272  
Number of Units: 13

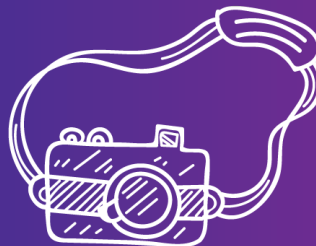
## Instagram Worthy Spots



*New London Dam*  
New London



*Wall Mural*  
New London



*Eagle Lake Trail* | Willmar



# Events

The Willmar Lakes Area is home to a wide variety of events and annual festivals. Visit our Events calendar at [www.willmarlakesarea.com](http://www.willmarlakesarea.com) to find the most up to date information on events taking place in our area.



*Willmar Stingers | Willmar*



*Celebrate the Light of the World | Willmar*



*Rockin' Robbins | Willmar*



*Kandiyohi County Fair  
Willmar*



*Green Lake Triathlon  
Spicer*



*Prairie Pothole Day  
New London*



*Holidaze Parade | Willmar*





photo credit: Sydney Fischer

*Mayor's Bike Ride*  
New London, Spicer, Willmar



photo credit: Prairie Woods Environmental Learning Center

*Halloween Haunt* | Spicer



photo credit: Prairie Woods Environmental Learning Center

*Winter Fun Day at PWECC*  
Spicer



photo credit: Little Crow Ski Team

*Little Crow Ski Show* | New London



@abarber

*Winterfest* | Spicer



photo credit: Beth Fischer

*Antique Car Run*  
New London



photo credit: Bill Zimmer

*KRA Speedway*  
Willmar



photo credit: Gregory Harp

*Atwater Threshing Days*  
Atwater



# Uniquely Local Restaurants



photo credit: The Oaks at Eagle Creek

*The Oaks At Eagle Creek*  
Willmar



photo credit: Beth Fischer

*Alley On Ash* | New London



photo credit: Bailey Hovland

*Azteca* | Willmar



photo credit: Willmar Mainstreet

*Frieda's Cafe* | Willmar

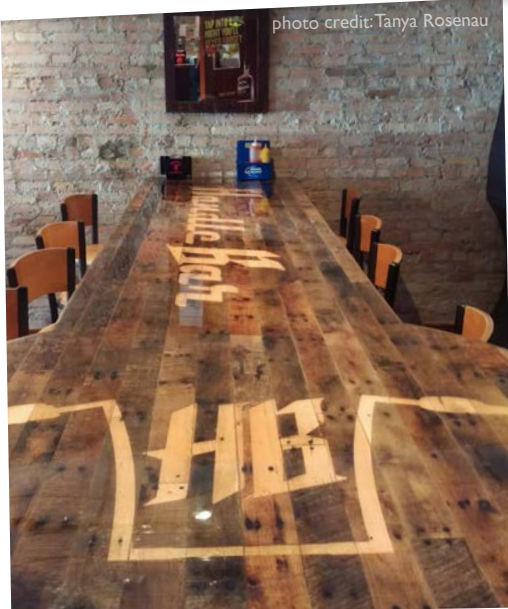


photo credit: Tanya Rosenau

*The Handle Bar* | Atwater



photo credit: Bailey Hovland

*Middle Fork Cafe* | New London & Willmar

Find our complete dining directory at  
[www.willmarlakesarea.com](http://www.willmarlakesarea.com)





*O'Neil's | Spicer*



*Ruff's Wings & Sports Bar | Willmar*



*Goat Ridge Brewing Co.  
New London*



*Somali Star | Willmar*



*Westwood Cafe | Spicer*



*Jake's Pizza | Willmar*



*Kafe La Baja | Spicer*





**Join us for Willmar Fests 2021**  
June 22-27, 2021 [willmarfests.com](http://willmarfests.com)

**Green Lake Cruises**  
Enjoy a fun and relaxing 2-hour cruise on Green Lake!  
Cruises can accommodate up to 55 people, full bar and restroom on board  
Pontoon Rentals



**Green Lake Cruises** [www.greenlakecruises.com](http://www.greenlakecruises.com)  
159 Lake Ave. S. • Spicer, MN 56288  
**320-894-5774**

**WLA WILLMAR LAKES AREA chamber of commerce**  
*"To advocate and promote the area-wide business community"*

CONDUIT. CONDUCTOR. CONVEYER

**MEMBERS WANTED!**  
Investing in you, your business, your employees, and the community  
Proudly serving businesses throughout the communities of Kandiyohi County

**INVEST TODAY!**



Contact YOUR Chamber  
[www.willmarareachamber.com](http://www.willmarareachamber.com)  
[chamber@willmarareachamber.com](mailto:chamber@willmarareachamber.com)  
(320) 235-0300  
f i n

**Super 8 BY WYNDHAM**

**The Best Lodging Value In The Willmar Lakes Area!**  
**320-235-4444**



We believe all people should live in a safe, sustainable, and **BEAUTIFUL COMMUNITY.**



**BOLTON & MENK**  
Real People. Real Solutions.  
[Bolton-Menk.com](http://Bolton-Menk.com)



**TENSEN MARINE**  
SALES & SERVICE


[www.TensenMarine.com](http://www.TensenMarine.com)  
Dealer for Sylvan and Evinrude  
320-967-4291

**YAMAHA** **FLOE** **SYLVAN** **EVINRUDE**  
BOATS & LIFTS

**PRINSCO**  
WATER MANAGEMENT SOLUTIONS

108 Hwy. 7  
800-992-1725

**HOME TO THE WILLMAR**    
**CARDINALS**



**CHARTER FOR SPORTING EVENTS AND GROUP OUTINGS**

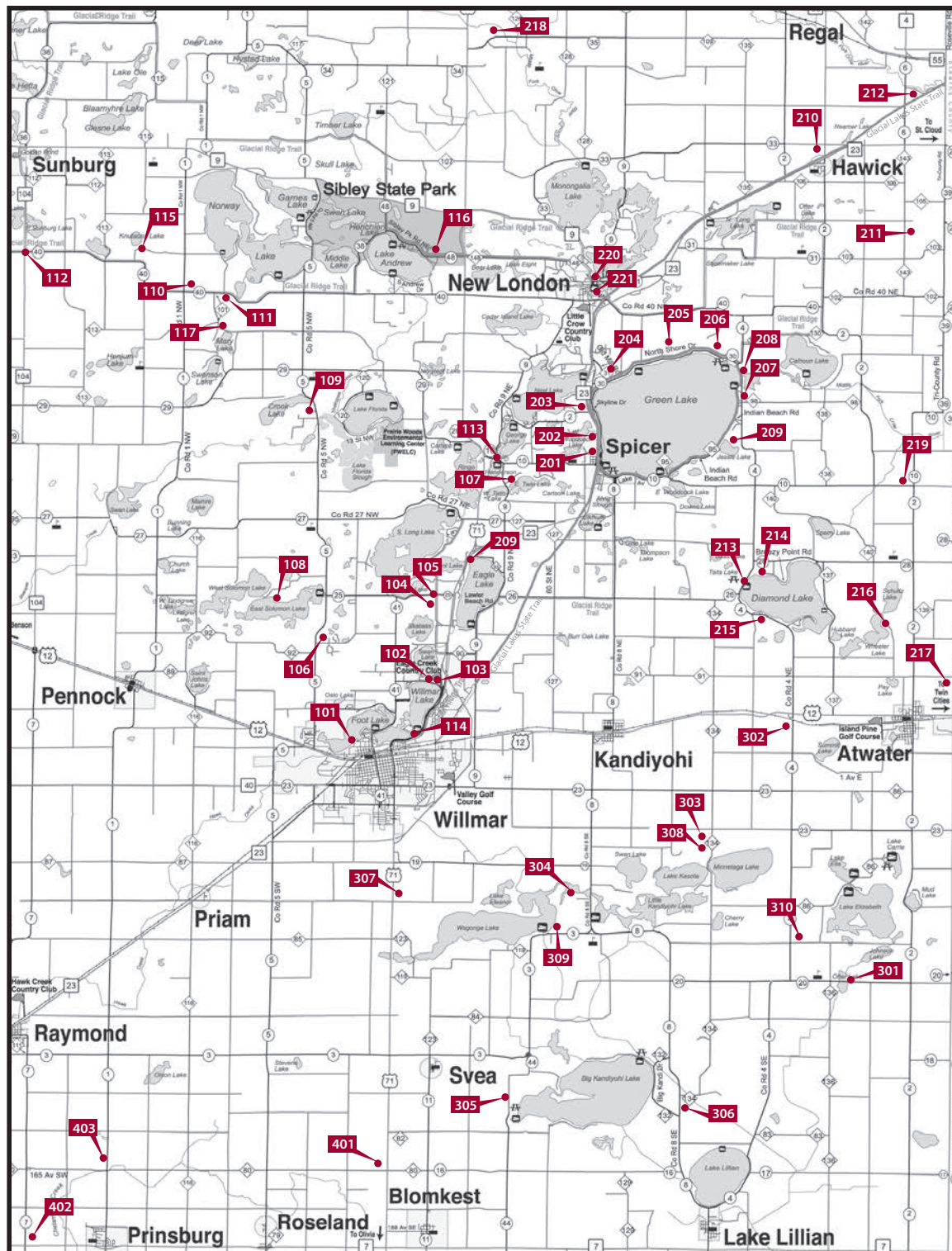
**Willmar Bus**  
**CHARTER • TOURS**

**Charter & Tours by Luxury Motorcoach**  
[www.willmarbus.com](http://www.willmarbus.com)  
**800-858-8687 320-235-6230**



# Historical Markers

The first historical marker in the county was erected in 1981 for Captain Cady, an army officer assigned to patrol the frontier from Hutchinson to the Red River. In June of 1863 the captain with a patrol of three soldiers came upon a party of Dakota in the Kandiyohi Lakes Country and after a short chase and firefight the captain was shot through the heart. This marker is located 7 miles south of Atwater on County Road 2, then 1.5 miles west of County Road 20. Historical Marker number 301.



- 101 Berger Thorson
- 102 Foot Cabin
- 103 Grasshopper Plague
- 104 Erickson Cabin
- 105 First Church
- 106 Settlers Killed
- 107 Olaf Haugen
- 108 Guri Endreson Cabin
- 109 Settlers Escaped
- 110 Military Post
- 111 Isle of Refuge
- 112 Lundborg Cabin
- 113 Dance Site
- 114 Robbins Island
- 115 Old Log Church
- 116 Ox Cart Trail
- 117 Jericho
- 201 Columbia
- 202 First Home in County
- 203 Little Crow's Camp
- 204 Green Lake Village
- 205 First Missionary
- 206 Great Dakota Camp
- 207 Green Lake Burial Mounds
- 208 Irving Township
- 209 Fullerville Township
- 210 Battle of the Broom
- 211 Cape Bad Luck
- 212 Threshing Crew Attacked
- 213 U.S. Dakota Conflict Site
- 214 Gates Homestead
- 215 Red River Trail
- 216 Refugee Camp
- 217 Dakota Conflict
- 218 Shipstead Homestead
- 219 1872 Blizzard
- 220 Louis Larson Home
- 221 Lebanon Church
- 301 Captain Cady
- 302 Train Wreck
- 303 Capitol Hill
- 304 John Other Day Camp
- 305 Military Post
- 306 U.S. Dakota Conflict Aftermath
- 307 Whitefield Township
- 308 Carrie Johnson
- 309 Wakanda
- 310 Farm Holiday
- 401 1873 Blizzard
- 402 Dakota War Camp
- 403 Washburn Farm



# Our Communities

The Willmar Lakes Area has several towns scattered throughout the lakes, rolling hills and farmland of Kandiyohi County. Our area is home to over 300 lakes, a thriving art scene, historical attractions, exceptional school districts, a growing job market, and friendly communities. With a beautiful blend of many cultures and faiths, Kandiyohi County cultivates a unique environment with plenty of diverse shopping and dining options as well as a variety of events and festivals. See for yourself why Kandiyohi County is a great place to live, work and play.

For more information about Kandiyohi County and our communities' employers, education, places to worship, child care, real estate, healthcare, local businesses and more visit:

[www.willmarlakesarea.com](http://www.willmarlakesarea.com) | [www.kandiyohi.com](http://www.kandiyohi.com)  
[www.willmarareachamber.com](http://www.willmarareachamber.com) | [www.kcmn.us](http://www.kcmn.us)

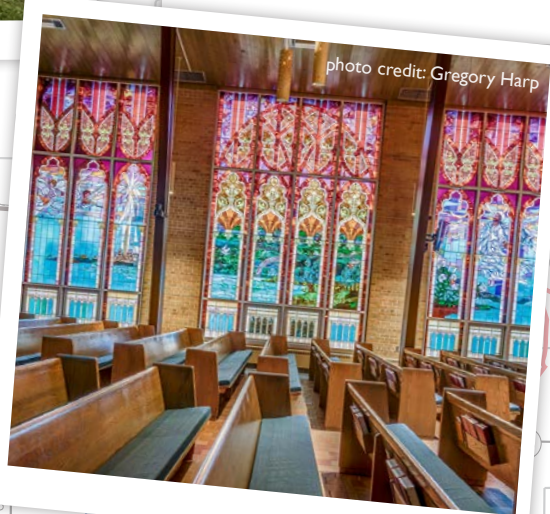






photo credit: Bill Zimmer



photo credit: David Feist



photo credit: Sydney Fischer



photo credit: Gregory Harp





**Willmar**

**Legend:**

- Fast Food**
  - 44. Dairy Queen Grill & Chill
  - 45. Burger King (Hwy.12)
  - 46. Subway - East side
  - 47. McDonald's
  - 48. Subway
  - 49. Kentucky Fried Chicken
  - 50. Burger King (1st St.)
  - 51. Dairy Queen Grill & Chill
  - 52. Erbert & Gerbert's
  - 53. Taco John's
  - 54. Qdoba
  - 55. Culver's
  - 56. Arby's
  - 57. Jimmy John's
  - 58. Hardee's
  - 59. Taco Bell
  - 60. Gilberto's Mexican Taco Shop
  - 61. Star Grill
- Coffee House / Cafe**
  - 28. Caribou Coffee
  - 29. Dunn Bros.
  - 30. Middle Fork Café
  - 31. Starbucks
  - 32. The Goodness
  - 33. LuLu Bean's
  - 34. Caribou Cabin
- Pizza Parlors**
  - 35. Domino's
  - 36. Green Mill
  - 37. Little Caesars
  - 38. Pizza Ranch
  - 39. Giovanni's
  - 40. Jake's Pizza
  - 41. Papa Murphys (Take-N-Bake)
  - 42. 1000 Degrees Neapolitan Pizza
  - 43. Zeppole's Pizza & Pasta
- Places of Worship**
  - 1. Eagle Lake Lutheran (ELCA)
  - 2. Willmar Bible Church
  - 3. Word of Faith Family Church (non-denominational)
  - 4. Jehovah's Witnesses
  - 5. Church of Jesus Christ of Latter Day Saints
  - 6. Harvest Community Church
  - 7. Church of the Nazarene
  - 8. The Church of St. Mary
  - 9. Cornerstone Baptist Church
  - 10. Calvary Lutheran (ELCA)
  - 11. Refuge Church
  - 12. First Reformed Church
  - 13. Vinje Lutheran(ELCA)
  - 14. First Covenant Church
  - 15. United Methodist Church
  - 16. Rock of Life CRC
  - 17. Redeemer Lutheran (LCMS)
  - 18. Immanuel Lutheran (Wisc.)
  - 19. Living Hope
  - 20. Willmar Assembly of God Church
  - 21. First Presbyterian Church
  - 22. Paz Y Esperanza (ELCA)
  - 23. Bethel Lutheran (ELCA)
  - 24. Willmar Unitarian Church
  - 25. Salvation Army
  - 26. Willmar Gospel Hall
  - 27. Grace Baptist Church
- Restaurants / Bars / Lounges**
  - 62. The Oaks at Eagle Creek
  - 63. Green Mill
  - 64. Ruff's Wings & Sports Bar
  - 65. Spurs Bar & Grill
  - 66. McMillan's
  - 67. Perkins
  - 68. Applebee's
  - 69. Freida's
  - 70. Grizzly's
  - 71. Golden Palace
  - 72. El Tapatio
  - 73. Rosita's Grill
  - 74. Panda Garden
  - 75. Azteca
  - 76. American Legion
  - 77. Willmar VFW
  - 78. Bihi's Restaurant
  - 79. Faafan Restaurant
  - 80. Somali Star
- Brewery**
  - 81. Foxhole Brewhouse
- Hotels / Motels**
  - 82. Lakeview Inn
  - 83. Best Western Plus & Willmar Conference Center
  - 84. AmericInn by Wyndham
  - 85. Days Inn by Wyndham
  - 86. Holiday Inn Express & Suites
  - 87. Cozy Inn
  - 88. Super 8 by Wyndham
  - 89. Country Inn & Suites
- Entertainment**
  - 90. The Barn Theatre
  - 91. Dorothy Olson Aquatic Center
  - 92. Rice Splash Pad
  - 93. Destination Playground
  - 94. Schwanke's Museum
  - 95. Kandiyohi County Historical Society
  - 96. The Village Children's Museum
  - 97. KRA Speedway



# New London

- **Coffee House / Cafe**

1. Middle Fork Café
2. Lake Affect Coffee

- **Restaurants / Bars / Lounges**

3. Country Stop / A&W
4. American Legion
5. Alley On Ash

- **Places of Worship**

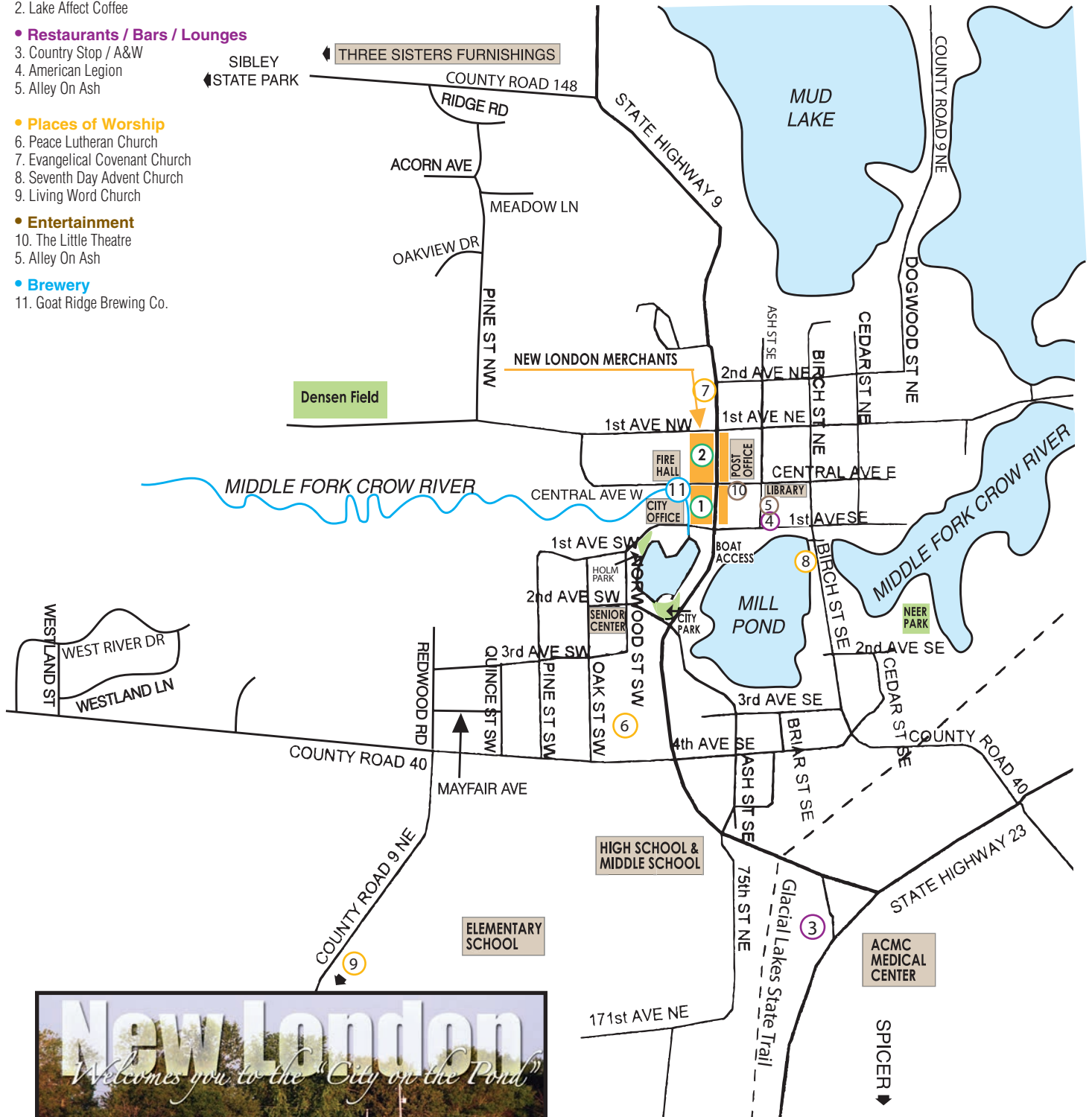
6. Peace Lutheran Church
7. Evangelical Covenant Church
8. Seventh Day Advent Church
9. Living Word Church

- **Entertainment**

10. The Little Theatre
5. Alley On Ash

- **Brewery**

11. Goat Ridge Brewing Co.





# Spicer









Generous hospitality  
*all are welcome*

An open table of holy communion  
*all are welcome*

Open conversations on life & faith  
*all are welcome*

All questions honored  
*all are welcome*



**Bethel**  
the church downtown

Sunday Worship  
9:15am

Pastor Jonathan Dahl  
bethelinwillmar.org  
320-235-5450  
411 Becker Ave. SW Willmar

Upscale Bar & Grill  
Live music every Sunday + upcoming events  
listed online. Great Food - Great Service!



Open Daily from 11am - 1am  
Full menu served daily with  
30 Beers on Tap and great  
cocktail selections



**Downtown Spicer • www.oneilsbar.com • 320-796-6524**



**K 95.3** HOT COUNTRY



**THE KANGAROO! 97.3**  
True country from the 70s 80s 90s and more

# Central Minnesota Christian School



Located in Prinsburg,  
Just 15 miles SW  
of Willmar  
Full Busing Service  
Available  
(320) 978-8700  
[www.cmcschool.org](http://www.cmcschool.org)



"CHRIST-CENTERED,  
QUALITY EDUCATION"

Minnesota's #1 Community College and US Top 20, niche.com




**When It's YOUR Time!**

[ridgewater.edu](http://ridgewater.edu) | 800-722-1151



COMMUNITY CHRISTIAN SCHOOL

Enroll your child today  
Preschool through 12<sup>th</sup> grade

Truth ● Knowledge ● Virtue ● Community

[www.willmarccs.com](http://www.willmarccs.com) 320-235-0592

Happy Hour  
MON-FRI 4:30-6:30PM



Lunch Specials  
MON-SAT 11AM-2PM

# Willmar Eagles Club

**WEDNESDAY  
NIGHT BURGER  
BASKET**

Welcome Eagles Members

**\$7.50**

Kitchen is open 5-8

Open to the public for meals

**Willmar Eagles Club #2334**  
136 W. 6th St. • 320.235.2334

 KITCHEN HOURS: Mon. - Sat. 11am-2pm, Wed. 5-8 p.m., Fri. & Sat. Evenings 5pm-8pm



# WILLMAR COMMUNITY EDUCATION

Inspire. Engage. Learn.



- Early Childhood Education
- Youth & Adult Enrichment
- Adult Basic Education
- Cardinal Place
- Facility Rentals

Willmar Community Education  
1234 Kandiyohi Avenue SW  
Willmar, MN 56201  
320-231-8492 • [www.cewillmarmn.com](http://www.cewillmarmn.com)

Be Active, Connect  
& Have Fun



Eagle Creek Golf Club  
and The Oaks  
Restaurant & Event Center

Willmar's Premier  
18 Hole Golf Course  
and Restaurant

1000 26th Ave NE  
Willmar, MN 56201  
[www.willmargolf.com](http://www.willmargolf.com)  
[www.oaksateaglecreek.com](http://www.oaksateaglecreek.com)



12718 10th Street NE | Spicer, MN 56288 | 1-320-354-5894



## PRAIRIE WOODS ENVIRONMENTAL LEARNING CENTER



*A regional center for environmental education, team building and outdoor recreation. Beautiful venues for meetings, receptions and special events.*

[www.prairiewoodselc.org](http://www.prairiewoodselc.org) • Email: [prairiewoods@prairiewoodselc.org](mailto:prairiewoods@prairiewoodselc.org)

### Retreat & Conference Center

Day and Overnight Accommodations • Food Service Available  
Year Round Options Available To All Types Of Groups



**Annual Quilt Auction: July 23-24th 2021**

Call to reserve your family reunion, business conference, or group meeting today.  
(320) 796-2181 • [www.gllm.org](http://www.gllm.org) • [camp@gllm.org](mailto:camp@gllm.org)  
9916 Lake Ave. S. • Spicer, MN 56288



## Get Stung With The Fun




For tickets call  
320-222-2010

[www.willmarstingers.com](http://www.willmarstingers.com)



## KANDIYOHI COUNTY AREA FAMILY YMCA

Where Community Comes Together

**For A Better Us  
Stay With Us**



1000 Lakeland Dr SE  
PO Box 757 Willmar, MN 56201  
320 222 9622 [www.kandiymca.org](http://www.kandiymca.org)



# WEST CENTRAL MINNESOTA

Places to Play. Places to Stay

## Little Crow Golf Resort

a new place to  
gather, golf and  
stay.



## 15th Street Flats

multi-family housing.



## Goat Ridge Brewing Company

crafting beer and  
building community.



Learn how the EDC is playing an active part in helping  
businesses start and grow in Kandiyohi County.

[kandiyohi.com/businesshub](http://kandiyohi.com/businesshub)





**HSB**  
HOME STATE BANK  
PEOPLE YOU CAN TALK TO.

Willmar  
**320-231-1118**  
[www.hsbofmn.com](http://www.hsbofmn.com)  
Member FDIC



**BOLLIGinc**  
engineering & environmental

---

▪ Engineers ▪ Architects ▪ Surveyors

[www.bollig-engineering.com](http://www.bollig-engineering.com) | 320.235.2555  
Office Locations: Willmar & Sartell, MN



**P Perkins Lumber**  
Spicer & Willmar  
*Quality at work for you.*

83rd Anniversary  
Design • Drafting • Estimates  
Delivery • Installation  
Since 1938

**Spicer** 796-2105    **Interiors Showroom** 222-3993    **Willmar** 235-3242

**BUNDLE AND SAVE WITH TDS®**



**INTERNET | TV | PHONE**



- **TDS TV+** includes streaming integration, Cloud DVR, voice remote, and more
- **Fiber Internet** with speeds up to 1Gig
- Unlimited local and long distance **phone**
- **No contract**
- **Bundle and save**

**1-888-290-9532 | [tdstv.com](http://tdstv.com)**

Internet speed are up to and not available in all areas. Delinquent accounts may lose service. Services subject to TDS Terms of Service at [tdstelecom.com/ios](http://tdstelecom.com/ios), TDS Privacy Policy at [tdstelecom.com/privacy](http://tdstelecom.com/privacy), and TDS Acceptable Use Policy at [tdstelecom.com/use](http://tdstelecom.com/use). TDS Telecom®, TDS TV®, and TDS® are registered trademarks of Telephone and Data Systems, Inc. Copyright © 2021, TDS Telecommunications LLC, All Rights Reserved. 204375/1-21/12385

**INSURANCE BY STREHLOW.com**




**Auto • Home • Business • Farm • Life  
Health • Bonds • Rec. Vehicles**

Andy • Anne • Beth  
Kim • Norm, CIC • Tammy



320-235-1091 • 716 1st St. S. • Willmar, MN 56201  
Agency Principal: Andy Jacobson  
[ajacobson@insurancebystrehlow.com](mailto:ajacobson@insurancebystrehlow.com)



**Over 1,000 Cars  
at [MillsAuto.com](http://MillsAuto.com)**







Paul Ryan, Broker/Owner  
320-295-3121  
paulryan@remax.net



Lacey Alderks  
320-266-1631  
laceya@remax.net



Jon Anderson  
320-905-2187  
jonanderson@remax.net



Stacey Jorschumb  
320-212-7093  
staceyjorschumb@remax.net



Kristen Lidbeck  
320-444-8004  
kristen.lidbeck@remax.net

# RE/MAX<sup>®</sup>

## Preferred Realty



# THE RIGHT AGENT EVERY STEP OF THE WAY

Like us on Facebook!  
[facebook.com/remaxpreferredrealty](https://facebook.com/remaxpreferredrealty)



Joe Haen  
320-212-6973  
joehaen@remax.net



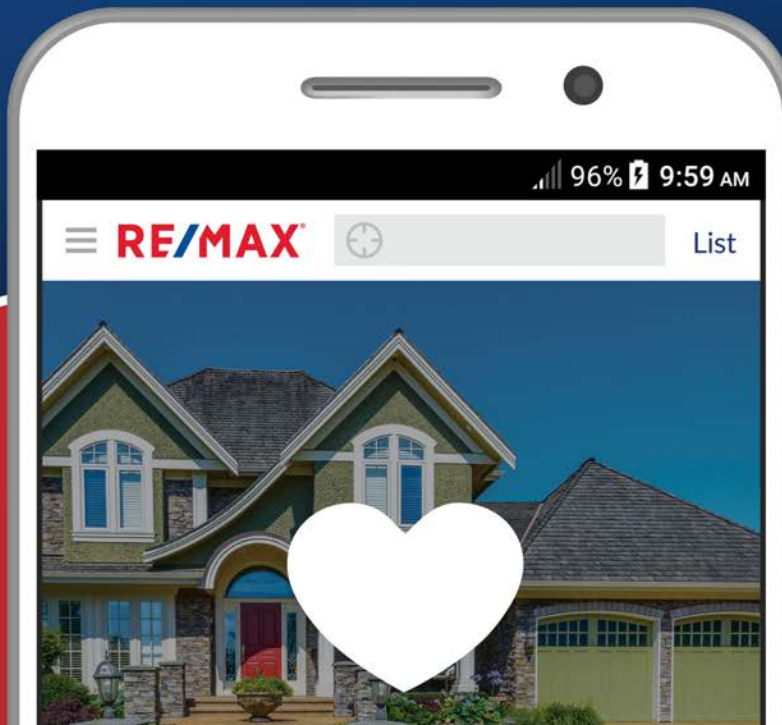
Kathy Haen  
320-522-1285  
khaen@remax.net



Randy Ryan  
320-894-2831  
rpryan@remax.net



Lisa Walhof  
320-979-7220  
lisawalhof@remax.net



**RE/MAX PREFERRED REALTY**  
770 HWY 71 NE  
WILLMAR, MN 56201  
320-231-1221

155 ACCESS WAY  
SPICER, MN 56288  
320-796-0086

824 E LINCOLN  
OLIVIA, MN 56277  
320-523-2607

Download the app today!